



CHEROKEE<sup>®</sup>  
— MEDICAL —  
UNIFORMS

S P R I N G  
2 0 2 4

# C O N T

CHEROKEE SPRING 2024 CATALOG

04

INTRODUCTION

06

ATMOS

14

CHEROKEE BY CHEROKEE

20

WORKWEAR REVOLUTION

27

WORKWEAR REVOLUTION TECH

28

WORKWEAR ORIGINAL

31

WORKWEAR PROFESSIONALS

33

WORKWEAR CORE STRETCH

Cover image,  
ATMOS  
TOP CK837A  
COLOR SUGAR MELON

# EVENTS

**36**

ALLURA  
PROTECTED PRODUCT

**40**

ALLURA SELECT  
PROTECTED PRODUCT

**42**

IFLEX

**44**

FORM

**48**

CHEROKEE PRINTS

**58**

TOONIFORMS

**64**

PROJECT LAB

**66**

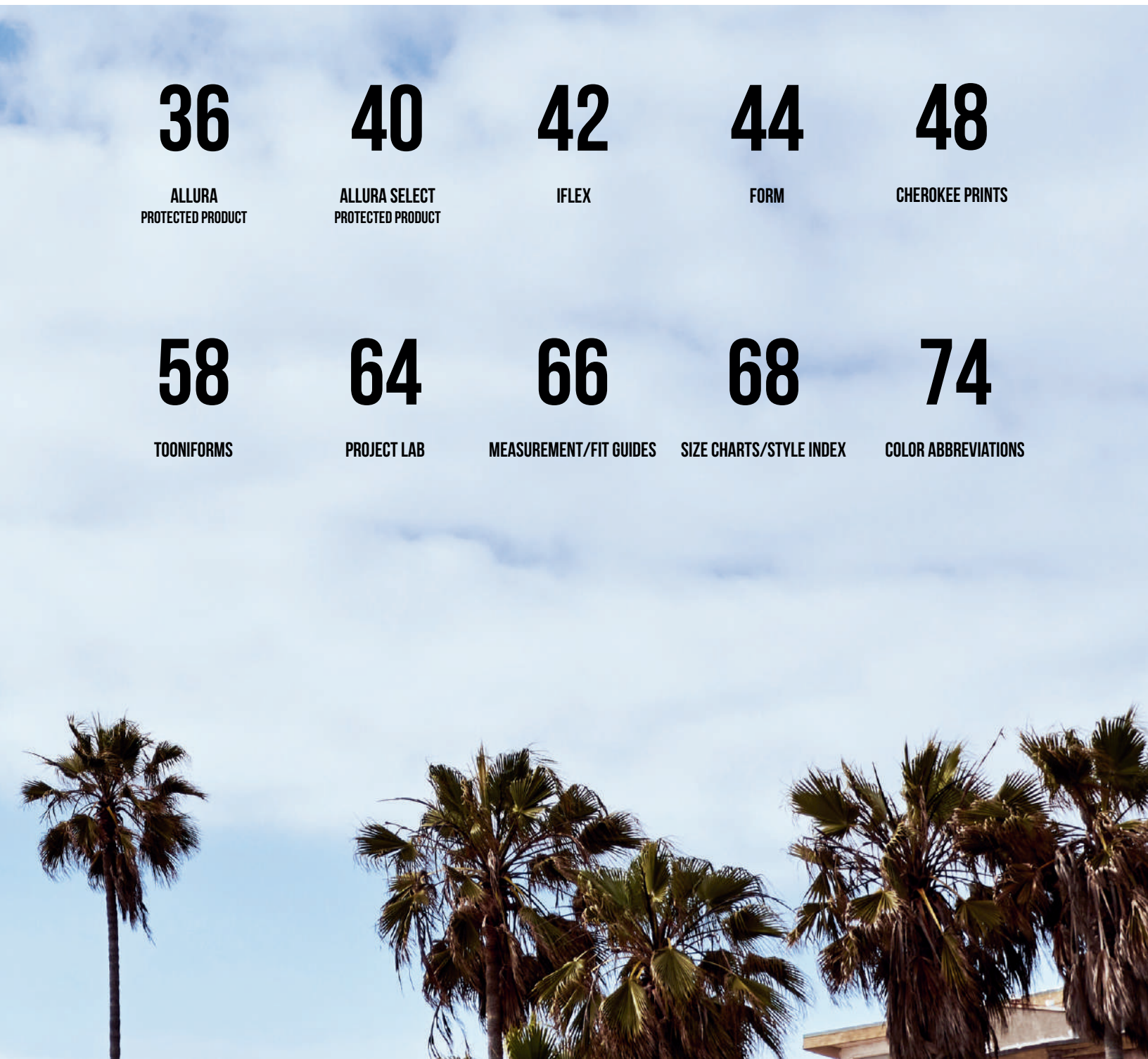
MEASUREMENT/FIT GUIDES

**68**

SIZE CHARTS/STYLE INDEX

**74**

COLOR ABBREVIATIONS











## WE FIT WHO YOU ARE

As the world's best-loved medical apparel brand, Cherokee Uniforms celebrates and empowers our community of caregivers – and retailers – in all their wonderful diversity.

We're dedicated to providing the most inclusive range of styles, colors, fits, and sizes across a wide variety of collections. All at a great value. And all with next-level service and ease for our retail partners, whether you're serving individual customers, large groups, or anything in between.

Thanks for your loyalty and support, and for being part of the Cherokee family.

From left to right,

**FORM**

TOP CK390, BOTTOM CK092,  
COLOR PEWTER

**ALLURA**

TOP CKA685, BOTTOM CKA184,  
COLOR SAGE HEATHER

**ATMOS**

TOP CK718A, BOTTOM CK132A,  
COLOR TEAL BLUE

**CHEROKEE BY CHEROKEE**

TOP CK749A, BOTTOM CK249A,  
COLOR VIBRANT VIOLET

**ATMOS**

TOP CK837A, BOTTOM CK138A,  
COLOR SUGAR MELON

# ATMOS

An all-new collection created for the healthcare environment, crafted to help keep you cool and comfortable in any condition.



**MOISTURE  
WICKING**



**TEMPERATURE  
REGULATION**



**TWO-WAY  
STRETCH**



**40% RECYCLED  
POLY**

**COOLMAX®**

COOLMAX® is a trademark of The LYCRA Company

POWERED BY  
**PROTX2®**

## A COOLING TREND IS IN EFFECT

Experience the ultimate in comfort and performance with Atmos, made with a state-of-the-art performance fabric with COOLMAX® technology which draws moisture away from the skin for a constant cooling effect. Atmos is easy care, fast drying, and engineered to rise to the occasion, no matter the temperature. Also, stay fresh all shift with Protex 2 antimicrobial!



This page,  
**ATMOS**  
TOP CK836A,  
COLOR SUGAR MELON

Opposite page,  
**ATMOS**  
TOP CK837A, BOTTOM CK138A,  
COLOR SUGAR MELON



**NEW**  
COLLECTION



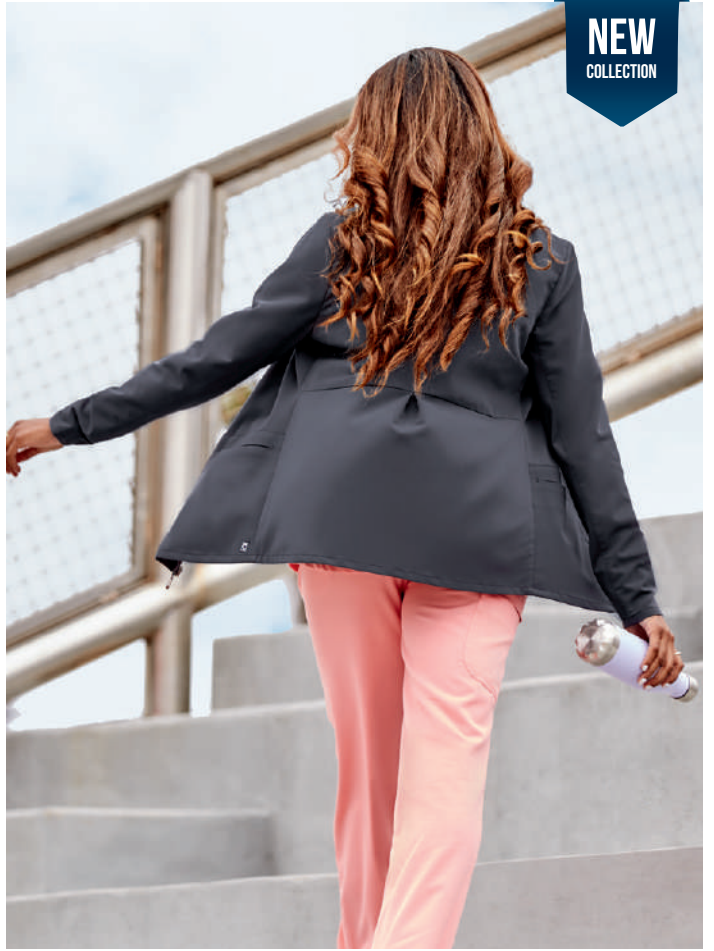
# ATMOS



Both pages,  
**ATMOS**  
TOP CK837A, BOTTOM CK136A,  
COLOR SUGAR MELON  
JACKET CK356A  
COLOR PEWTER



**NEW**  
COLLECTION



# ATMOS



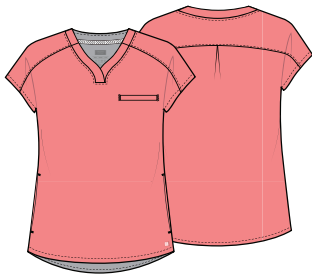
From left to right,  
**ATMOS**  
TOP CK719A, BOTTOM CK131A,  
COLOR TEAL BLUE

TOP CK718A, BOTTOM CK131A,  
COLOR TEAL BLUE  
JACKET CK329A  
COLOR PEWTER



**NEW**  
COLLECTION





**CK836A NEW**  
**V-NECK TOP**

XXS-5XL (25.5")

**FABRIC**  
41 RPET / 36 Eco Vero /  
20 Coolmax / 3 Lycra

**PRODUCT DETAILS**

- Contemporary fit
- Shaped neckline
- Three pockets: welt chest pocket, two side seam pockets
- Dolman sleeves
- High-low shirttail hem

**AVAILABLE COLORS**



Fashion color only come in XS-3XL



**CK837A NEW**  
**V-NECK TOP**

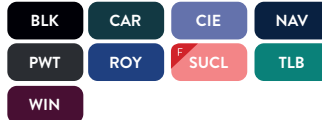
XXS-5XL (25.5")

**FABRIC**  
41 RPET / 36 Eco Vero /  
20 Coolmax / 3 Lycra

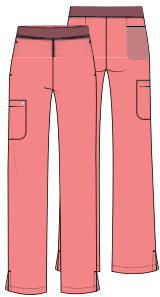
**PRODUCT DETAILS**

- Contemporary fit
- Stitching detail along neckline
- Two front entry patch pockets
- Knit sleeve panel
- Notch at sleeve hem
- Shirttail hem
- Side vents with patterned twill tape

**AVAILABLE COLORS**



Fashion color only come in XS-3XL



**CK136A/P/T NEW**  
**MID-RISE PULL-ON CARGO PANT**

XXS-5XL (30.5")  
[P] XXS-2XL (28")  
[T] XS-2XL (33.5")

**FABRIC**  
41 RPET / 36 Eco Vero /  
20 Coolmax / 3 Lycra

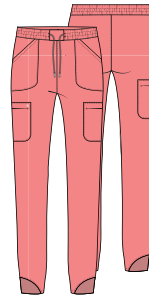
**PRODUCT DETAILS**

- Contemporary fit
- Chevron patterned elastic waistband
- Five pockets: two in-seam side pockets, front entry cargo pocket, two hidden back pockets
- Side vents with patterned twill tape
- Straight leg, 17 1/2" opening

**AVAILABLE COLORS**



Fashion color only come in XS-3XL [P] XS-2XL, No Tall



**CK138A/P NEW**  
**MID-RISE JOGGER**

XXS-5XL (29")  
[P] XXS-2XL (26.5")

**FABRIC**  
41 RPET / 36 Eco Vero /  
20 Coolmax / 3 Lycra

**PRODUCT DETAILS**

- Contemporary fit
- Chevron patterned elastic waistband
- Five pockets: two in-seam side pockets, front entry cargo pocket, two hidden back pockets
- Side vents with patterned twill tape
- Straight leg, 9 1/2" opening

**AVAILABLE COLORS**



Fashion color only come in XS-3XL [P] XS-2XL, No Tall



**CK356A NEW**  
**ZIP FRONT JACKET**

XXS-5XL (26.5")

**FABRIC**  
41 RPET / 36 Eco Vero /  
20 Coolmax / 3 Lycra

**PRODUCT DETAILS**

- Contemporary fit
- Stitching detail along neckline
- Two front entry patch pockets
- Knit sleeve panel
- Notch at sleeve hem
- Shirttail hem
- Side vents with patterned twill tape

**AVAILABLE COLORS**



Fashion (available while supplies last)





**CK718A NEW**  
**MEN'S V-NECK TOP**  
 XS-5XL (28.5")

**FABRIC**  
 41 RPET / 36 Eco Vero /  
 20 Coolmax / 3 Lycra

**PRODUCT DETAILS**

- Men's fit
- Knit neckband
- Zippered chest pocket
- High-low hemline
- Side vents with patterned twill tape

**AVAILABLE COLORS**



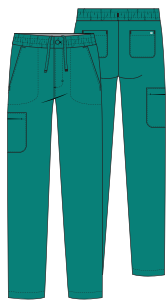
**CK719A NEW**  
**MEN'S V-NECK TOP**  
 XS-5XL (28.5")

**FABRIC**  
 41 RPET / 36 Eco Vero /  
 20 Coolmax / 3 Lycra

**PRODUCT DETAILS**

- Men's fit
- Stitching detail along neckline
- Three pockets: welt chest pocket, two front entry patch pockets
- Rounded high-low hem

**AVAILABLE COLORS**



**CK131A/S/T NEW**  
**MEN'S MID RISE ZIP FLY CARGO PANT**  
 XS-5XL (32")  
 [P] XS-2XL (29.5")  
 [T] S-XL (35")

**FABRIC**  
 41 RPET / 36 Eco Vero /  
 20 Coolmax / 3 Lycra

**PRODUCT DETAILS**

- Men's fit
- Interior elastic waistband with inside drawstring
- Zip fly with button closure
- Five pockets: two front pockets, front entry cargo pocket, two back patch pockets
- Tapered leg, 14" opening

**AVAILABLE COLORS**



**CK132A/S NEW**  
**MEN'S MID RISE JOGGER**  
 XS-5XL (29.5")  
 [S] XS-2XL (27")

**FABRIC**  
 41 RPET / 36 Eco Vero /  
 20 Coolmax / 3 Lycra

**PRODUCT DETAILS**

- Men's fit
- Reinforced elastic waistband with signature drawstring
- Mock fly
- Five pockets: two front pockets, two front entry cargo pockets, back zipper pocket
- Knit cuffs
- Tapered leg, 10" opening

**AVAILABLE COLORS**



**CK329A NEW**  
**MEN'S ZIP FRONT JACKET**  
 XS-5XL (29")

**FABRIC**  
 41 RPET / 36 Eco Vero /  
 20 Coolmax / 3 Lycra

**PRODUCT DETAILS**

- Men's fit
- Knit stand-up collar with hidden snap closure
- Placket with hidden zipper closure
- Three pockets: zipper chest pocket, two front entry patch pockets
- Knit sleeve panels

**AVAILABLE COLORS**



# CHEROKEE BY CHEROKEE

Crafted from fine linear texture dobby, with 10% spandex for unbelievable stretch, and thoughtful details throughout, this future-forward line continues to knock it out of the park.



360°  
STRETCH



MOISTURE  
WICKING



EASY  
CARE



STRONG  
& DURABLE



CERTAINTY®  
TECHNOLOGIES



From left to right,  
**CHEROKEE BY CHEROKEE**  
TOP CK749A, BOTTOM CK249A,  
COLOR CIEL BLUE

TOP CK749A, BOTTOM CK249A,  
COLOR VIBRANT VIOLET

TOP CK749A, BOTTOM CK249A,  
COLOR VIBRANT VIOLET



NEW  
COLORS



# CHEROKEE BY CHEROKEE

NEW  
STYLE







**CHEROKEE BY CHEROKEE**  
**TOP CK752A, BOTTOM CK252A,**  
**COLOR ROYAL**



**CK748A**  
**TUCKABLE V-NECK TOP**  
 XS-3XL (26")

**FABRIC**  
 90 Poly / 10 Spandex Linear Texture

**PRODUCT DETAILS**

- Contemporary fit
- Rib-knit neckband
- ID badge tab on neckband
- Welt chest pocket
- Back yoke
- Side vents
- High-low shirttail hem

**AVAILABLE COLORS**



**NEW COLORS**



**CK749A**  
**SNAP FRONT HENLEY TOP**  
 XS-3XL (26")

**FABRIC**  
 90 Poly / 10 Spandex Linear Texture

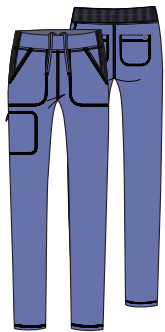
**PRODUCT DETAILS**

- Contemporary fit
- Rounded neckline with snap front placket
- Two patch pockets
- Front and back princess seams
- Rib-knit side panels
- Curved hem

**AVAILABLE COLORS**



**NEW COLORS**



**CK248A/P/T**  
**MID RISE**  
**PULL-ON CARGO PANT**  
 XS-3XL (29.5")  
 (P) XS-2XL (27")  
 (T) XS-XL (32.5")

**FABRIC**  
 90 Poly / 10 Spandex Linear Texture

**PRODUCT DETAILS**

- Contemporary fit
- Elastic-reinforced flat front waistband with interior drawstring and rib-knit back waistband
- Four pockets: two front pockets, in-seam zipper cargo pocket, back pocket
- Rib-knit panels at top of side seams
- Tapered leg, 13½" opening

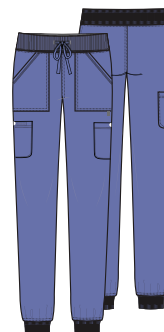
**AVAILABLE COLORS**



**NEW COLORS**



\*No Tall



**CK249A/P/T**  
**NATURAL RISE JOGGER**  
 XS-3XL (29")  
 (P) XS-2XL (26.5")  
 (T) XS-XL (31")

**FABRIC**  
 90 Poly / 10 Spandex Linear Texture

**PRODUCT DETAILS**

- Contemporary fit
- Elastic-reinforced rib-knit waistband with drawstring
- Four pockets: two front pockets, two snap-closure cargo pockets
- Rib-knit cuffs
- Tapered leg, 9½" opening

**AVAILABLE COLORS**



**NEW COLORS**



\*No Tall



**CK349A**  
**ZIP FRONT BOMBER JACKET**  
 XS-3XL (22")

**FABRIC**  
 90 Poly / 10 Spandex Linear Texture

**PRODUCT DETAILS**

- Contemporary fit
- Stand-up collar
- Two zipper pockets
- Rib-knit collar, cuffs, and waistband
- Piping at shoulder yokes
- Bungee ID badge loop at shoulder

**AVAILABLE COLORS**







**CK752A** **NEW**  
**MEN'S V-NECK TOP**  
 XS-3XL (28")

**FABRIC**  
 90 Poly / 10 Spandex Linear Texture

**PRODUCT DETAILS**

- Men's fit
- Rib-knit neckband
- Four pockets: chest pocket, zipper chest pocket, two patch pockets
- Back yoke

**AVAILABLE COLORS**



**CK824A**  
**MEN'S V-NECK TOP**  
 XS-3XL (28")

**FABRIC**  
 90 Poly / 10 Spandex Linear Texture

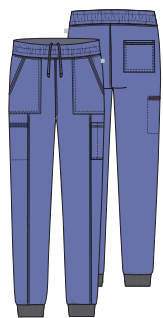
**PRODUCT DETAILS**

- Men's Modern fit
- Rib-knit neckband
- Two pockets: chest pocket, sleeve zip pocket
- Front and back yoke seams
- Side vents

**AVAILABLE COLORS**



**NEW COLOR**



**CK224A/S/T**  
**MEN'S PULL-ON JOGGER**

XS-3XL (30")  
 [PJ] XS-2XL (27.5")  
 [TJ] S-XL (33")

**FABRIC**  
 90 Poly / 10 Spandex Linear Texture

**PRODUCT DETAILS**

- Men's Modern fit
- Mid rise
- Elastic-reinforced waistband with inside drawstring
- Five pockets: two front pockets, welt zipper cargo pocket, cargo pocket with pen slot, back pocket
- Front leg seams
- Rib-knit cuffs
- Tapered leg, 10" opening

**AVAILABLE COLORS**



**NEW COLOR**



**CK252A/S/T** **NEW**  
**MEN'S PULL-ON PANT**

XS-3XL (32")  
 [PJ] XS-2XL (29.5")  
 [TJ] S-XL (35")

**FABRIC**  
 90 Poly / 10 Spandex Linear Texture

**PRODUCT DETAILS**

- Men's fit
- Elastic-reinforced rib-knit waistband with drawstring
- Zip fly front closure
- Five pockets: two front pockets, two cargo pockets with pen slots, back pocket
- Tapered leg, 15" opening

**AVAILABLE COLORS**



**CK394A**  
**MEN'S ZIP FRONT JACKET**  
 XS-3XL (27.5")


**FABRIC**  
 90 Poly / 10 Spandex Linear Texture

**PRODUCT DETAILS**

- Men's Modern fit
- Stand-up collar
- Two in-seam pockets
- Rib-knit cuffs
- Back yoke
- Chest zipper pocket

**AVAILABLE COLORS**



 Certainty® antimicrobial fabric technology is integrated into the garments in this collection to help fight odors. Wash all garments thoroughly after each use. Items featuring antimicrobial technology do not protect users or others against bacteria, viruses, or disease organisms. Always follow all best practices for infection prevention. Visit [CertaintyTechnologies.com](http://CertaintyTechnologies.com) for details.

# WORKWEAR REVOLUTION

One of our all-time best-selling collections, renowned for its durability, consistent quality, and polished, professional style.



ULTRA SOFT



TWO-WAY  
STRETCH



EASY CARE

**NEW  
COLOR**





NEW  
COLOR



Left page,  
WORKWEAR REVOLUTION  
TOP WW620, BOTTOM WW 105,  
COLOR SWEET CANTALOUPE

This page,  
TOP WW751, BOTTOM WW251,  
COLOR CARIBBEAN BLUE



**WW310  
SNAP FRONT JACKET**

XXS-5XL (27.5")

**FABRIC**  
78 Poly / 20 Rayon /  
2 Spandex Twill

**PRODUCT DETAILS**

- Modern Classic fit
- Two patch pockets and interior cellphone pocket
- Logo label with bungee loop
- Hidden instrument loop
- Front and back princess seams
- Back yoke
- Rib-knit cuffs

**AVAILABLE COLORS**



**WW698  
SNAP FRONT POLO SHIRT**

XXS-5XL (24")

**FABRIC**  
78 Poly / 20 Rayon /  
2 Spandex Twill

**PRODUCT DETAILS**

- Modern Classic fit
- Snap front closure
- Welt chest pocket
- Mesh side panels
- Reflective label
- Side vents

**AVAILABLE COLORS**



**WW2875  
V-NECK KNIT PANEL TOP**

XXS-5XL (24.5")

**FABRIC**  
78 Poly / 20 Rayon /  
2 Spandex Twill

**PRODUCT DETAILS**

- Modern Classic fit
- Kangaroo pocket
- Front and back yoke seams
- Black knit side panels (Navy knit side panels on Navy)

**AVAILABLE COLORS**



\* Navy side panels



**WW601  
V-NECK TOP**

XXS-5XL (26")

**FABRIC**  
78 Poly / 20 Rayon /  
2 Spandex Twill

**PRODUCT DETAILS**

- Modern Classic fit
- Two patch pockets
- Instrument loops in right pocket
- Mesh neckband and panels
- Front and back shoulder yokes
- Front vents
- Shirttail hem
- Reflective label and tape

**AVAILABLE COLORS**



**WW610  
MOCK WRAP TOP**

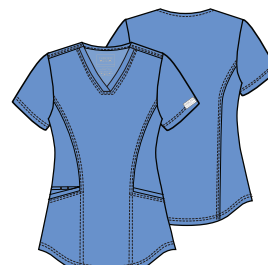
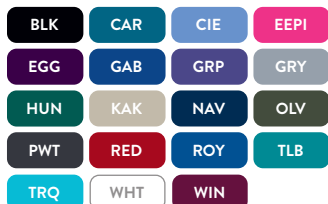
XXS-5XL (26")

**FABRIC**  
78 Poly / 20 Rayon /  
2 Spandex Twill

**PRODUCT DETAILS**

- Modern Classic fit
- Two patch pockets
- Hidden instrument loops
- Logo label with bungee loop
- Front and back princess seams
- Front shoulder yokes
- Side vents

**AVAILABLE COLORS**



**WW612P  
V-NECK TOP**

XXS-3XL (24")

**FABRIC**  
78 Poly / 20 Rayon /  
2 Spandex Twill

**PRODUCT DETAILS**

- Modern Classic fit
- Two inset pockets
- Elastic instrument loops above right pocket
- Front and back princess seams
- Shirttail hem

**AVAILABLE COLORS**







## WW620 V-NECK TOP

XXS-5XL (27")

### FABRIC

78 Poly / 20 Rayon /  
2 Spandex Twill

### PRODUCT DETAILS

- Modern Classic fit
- Three pockets: patch pocket with instrument loop on left, double patch pocket on right
- Logo label with bungee loop
- Back princess seams
- Side vents

### NEW COLOR

**STCP**

Fashion color only comes in XS-3XL

### AVAILABLE COLORS



\* XS-3XL



## WW657 TUCKABLE V-NECK O.R TOP

XXS-5XL (26")

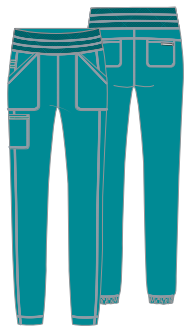
### FABRIC

78 Poly / 20 Rayon /  
2 Spandex Twill

### PRODUCT DETAILS

- Modern Classic fit
- Chest pocket
- Front and back yokes
- Curved hem
- Side vents

### AVAILABLE COLORS



## WW011/P/T NATURAL RISE JOGGER

XXS-5XL (29")  
[P] XXS-2XL (26.5")  
[T] XS-2XL (32")

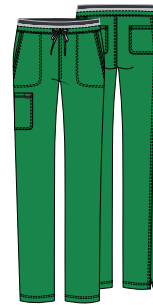
### FABRIC

78 Poly / 20 Rayon /  
2 Spandex Twill

### PRODUCT DETAILS

- Modern Classic fit
- Mesh on elasticized waistband
- Five pockets: two front patch pockets, cargo pocket, two back patch pockets
- Instrument loops
- Stylized hem
- Reflective label and tape
- Tapered leg, 11" opening

### AVAILABLE COLORS



## WW105/P/T MID RISE DRAWSTRING PANT

XXS-5XL (31")  
[P] XXS-2XL (28.5")  
[T] XS-2XL (34")

### FABRIC

78 Poly / 20 Rayon /  
2 Spandex Twill

### PRODUCT DETAILS

- Modern Classic fit
- Five pockets: two front pockets, cargo pocket, two back pockets
- Logo label with bungee loop
- Elastic knit waistband
- Tapered leg, 15" opening

### AVAILABLE COLORS

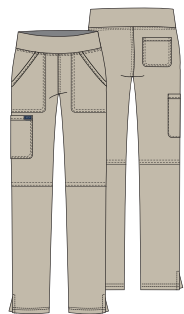


\* XS-3XL, [P] XS-2XL  
No Tall. SPJD has Pewter  
waistband.

### NEW COLOR

**STCP**

SPJD has Pewter waistband.



## WW110/P/T MID RISE PULL-ON CARGO PANT

XXS-5XL (31")  
[P] XXS-2XL (28.5")  
[T] XS-2XL (34")

### FABRIC

78 Poly / 20 Rayon /  
2 Spandex Twill

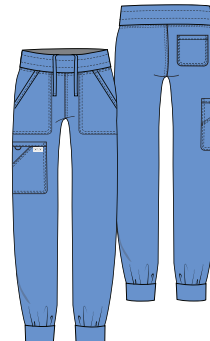
### PRODUCT DETAILS

- Modern Classic fit
- Elastic-reinforced knit waistband
- Four pockets: two front patch pockets, cargo pocket and back pocket
- Logo label with bungee loop
- Side vents
- Straight leg, 18" opening

### AVAILABLE COLORS



\* XXS-6XL, [P] XXS-3XL



## WW115/P/T MID RISE JOGGER

XXS-5XL (28.5")  
[P] XXS-2XL (26")  
[T] XS-2XL (31.5")

### FABRIC

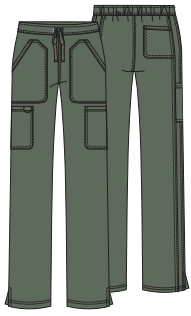
78 Poly / 20 Rayon /  
2 Spandex Twill

### PRODUCT DETAILS

- Modern Classic fit
- Elastic-reinforced knit waistband with interior drawstring
- Five pockets: two front patch pockets, double cargo pocket, back patch pocket
- Knit cuffs
- Tapered leg, 9 1/2" opening

### AVAILABLE COLORS





## WW120/P/T MID RISE DRAWSTRING CARGO PANT

XXS-5XL (31")  
[P] XXS-2XL (28.5")  
[T] XXS-2XL (34")

### FABRIC

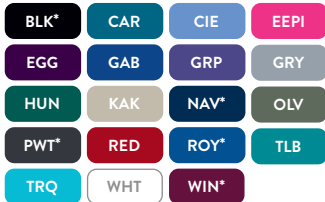
78 Poly / 20 Rayon /  
2 Spandex Twill

### PRODUCT DETAILS

- Modern classic fit
- Front patch and cargo pockets
- Back pocket
- Back elastic waistband
- Logo label with bungee loop
- Side vents
- Moderate flare leg, 18½" opening

\*[P] XXS-3XL

### AVAILABLE COLORS



## MEN'S STYLES



## WW751 MEN'S V-NECK TOP

XS-5XL (28")

### FABRIC

78 Poly / 20 Rayon /  
2 Spandex Twill

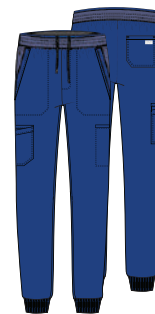
### PRODUCT DETAILS

- Men's Modern fit
- Mesh trim at neckline
- Double chest pocket with mesh trim
- Bungee loop on shoulder yoke
- Mesh back panel
- High-low hem with side vents

### AVAILABLE COLORS



### NEW COLORS



## WW251/S/T MEN'S JOGGER

XS-5XL (30")  
[P] XS-2XL (27.5")  
[T] S-2XL (33")

### FABRIC

78 Poly / 20 Rayon /  
2 Spandex Twill

### PRODUCT DETAILS

- Men's Modern fit
- Mid rise
- Elastic-reinforced pull-on waistband with inside drawstring
- Mesh trim on waistband and above front angled pockets
- Six pockets: two front angled pockets, double cargo pocket, welt cargo pocket, back patch pocket
- Faux fly
- Rib-knit cuffs
- Tapered leg, 10" opening

### AVAILABLE COLORS



### NEW COLORS



## WW603 MEN'S V-NECK TOP

XS-5XL (28.5")

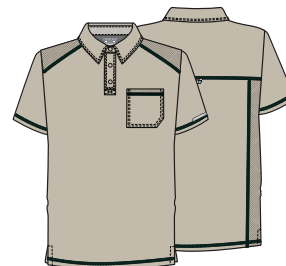
### FABRIC

78 Poly / 20 Rayon /  
2 Spandex Twill

### PRODUCT DETAILS

- Men's Modern fit
- Chest pocket, zip front pocket
- Instrument loop above zip pocket
- Mesh yoke and panels
- Locker loop
- Reflective label and tape

### AVAILABLE COLORS



## WW615 MEN'S POLO SHIRT

XS-5XL (28.5")

### FABRIC

78 Poly / 20 Rayon /  
2 Spandex Twill

### PRODUCT DETAILS

- Men's Modern fit
- Chest pocket
- Mesh yoke and panels
- Locker loop
- Reflective label

### AVAILABLE COLORS



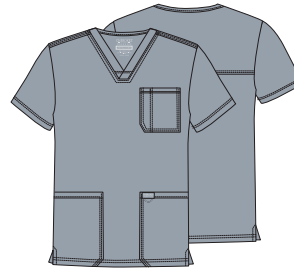


**WW320**  
**MEN'S ZIP FRONT JACKET**  
XS-5XL (27")

**FABRIC**  
78 Poly / 20 Rayon /  
2 Spandex Twill

- PRODUCT DETAILS**
- Men's Modern fit
  - Five pockets: patch pockets, welt chest pocket, cellphone pocket, sleeve zip pocket
  - Logo label with bungee loop
  - Locker loop
  - Rib-knit cuffs

**AVAILABLE COLORS**



**WW670**  
**MEN'S V-NECK TOP**  
XS-5XL (29")

**FABRIC**  
78 Poly / 20 Rayon /  
2 Spandex Twill

- PRODUCT DETAILS**
- Men's Modern fit
  - Chest pocket with pen slot
  - Two patch pockets
  - Logo label with bungee loop
  - Back yoke
  - Side vents

**AVAILABLE COLORS**

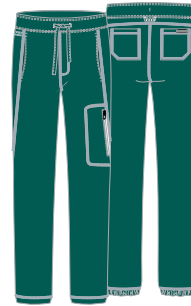
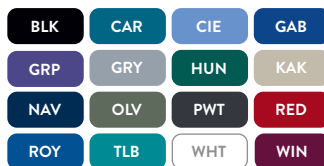


**WW690**  
**MEN'S TUCKABLE V-NECK TOP**  
XS-5XL (29")

**FABRIC**  
78 Poly / 20 Rayon /  
2 Spandex Twill

- PRODUCT DETAILS**
- Men's Modern fit
  - Chest pocket with pen slot
  - Logo label with bungee loop
  - Locker loop
  - Back yoke
  - Side vents

**AVAILABLE COLORS**

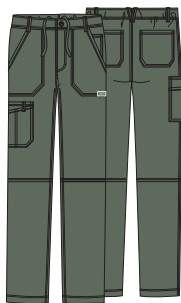


**WW012/S/T**  
**MEN'S JOGGER**  
XS-5XL (31")  
(S) XS-3XL (28.5")  
(T) S-2XL (34")

**FABRIC**  
78 Poly / 20 Rayon /  
2 Spandex Twill

- PRODUCT DETAILS**
- Men's Modern fit
  - Elastic waistband with drawstring
  - Five pockets: two front pockets, side seam zip pocket, two back pockets
  - Instrument and locker loops
  - Stylized hem
  - Reflective label and tape
  - Straight leg, 12" opening

**AVAILABLE COLORS**

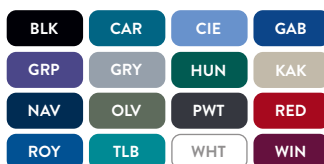


**WW140/S/T**  
**MID RISE PULL-ON CARGO PANT**  
XS-5XL (32")  
P1 XS-3XL (29.5")  
(T) S-2XL (35")

**FABRIC**  
78 Poly / 20 Rayon /  
2 Spandex Twill

- PRODUCT DETAILS**
- Men's Modern Fit
  - Seven pockets: double cargo pocket, patch pockets, back pockets, accessory pocket
  - Back elastic waistband with inside drawstring
  - Zip fly with button closure
  - Five belt loops
  - Logo label with bungee loop
  - Tapered leg, 19" opening

**AVAILABLE COLORS**







**WW625  
UNISEX TUCKABLE  
V-NECK TOP**

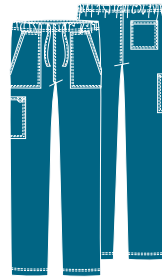
XXS-5XL (27.5")

**FABRIC**  
78 Poly / 20 Rayon /  
2 Spandex Twill

**PRODUCT DETAILS**

- Unisex fit
- Chest pocket with pen slot
- Bungee loop at shoulder seam
- Back yoke
- Side vents

AVAILABLE COLORS



**WW020/S/T  
UNISEX  
DRAWSTRING PANT**

XXS-5XL (31")  
(S) XXS-3XL (28.5")  
(T) XS-2XL (34")

**FABRIC**  
78 Poly / 20 Rayon /  
2 Spandex Twill

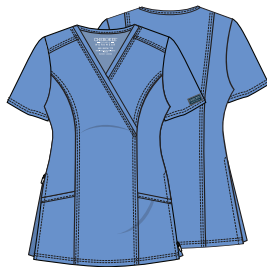
**PRODUCT DETAILS**

- Unisex fit
- Four pockets: patch pockets, cargo pocket, back pocket
- Elastic waistband with drawstring
- Bungee instrument loop
- Tapered leg, 16 1/2" opening

AVAILABLE COLORS



MATERNITY STYLES



**WW688  
MATERNITY MOCK WRAP TOP**

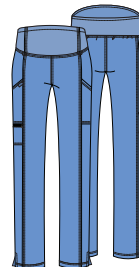
XXS-3XL (27")

**FABRIC**  
78 Poly / 20 Rayon /  
2 Spandex Twill

**PRODUCT DETAILS**

- Maternity fit
- Two patch pockets
- Front shoulder yokes
- Front and back princess seams
- Soft knit front panels
- Side zip gussets with mesh insets allow room to grow

AVAILABLE COLORS



**WW155/P/T  
MATERNITY  
PANT**

XXS-3XL (30")  
(P) XS-2XL (27.5")  
(T) S-XL (33")

**FABRIC**  
78 Poly / 20 Rayon /  
2 Spandex Twill

**PRODUCT DETAILS**

- Maternity fit
- Soft knit waistband
- Three pockets: two cargo pockets, zip pocket on right
- Bungee loops at waist
- Side vents
- Slim straight leg, 15" opening

AVAILABLE COLORS



# WORKWEAR REVOLUTION TECH

High tech and high touch, this popular collection is crafted with fabric engineered to fight odor and resist spills and stains.



ULTRA SOFT



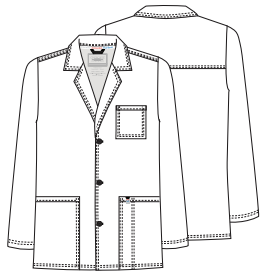
TWO-WAY  
STRETCH



EASY CARE



CERTAINTY  
TECHNOLOGIES



## WW400AB MEN'S 40" LAB COAT

XS-5XL (32")

### FABRIC

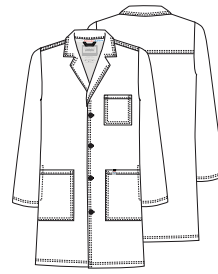
78 Poly / 20 Rayon /  
2 Spandex Twill

### PRODUCT DETAILS

- Men's Modern fit
- Four pockets: chest pocket, patch pockets, interior pocket for 8" tablet
- Notched lapel
- Self-covered button front closure

### AVAILABLE COLORS

WHT



## WW410AB MEN'S 40" LAB COAT

XS-5XL (40")

### FABRIC

78 Poly / 20 Rayon /  
2 Spandex Twill

### PRODUCT DETAILS

- Men's Modern fit
- Four pockets: chest pocket, patch pockets, interior pocket for 8" tablet
- Notched lapel
- Self-covered button front closure
- Side seam access opening

### AVAILABLE COLORS

WHT



## WW420AB 36" LAB COAT

XXS-5XL (36")

### FABRIC

78 Poly / 20 Rayon /  
2 Spandex Twill

### PRODUCT DETAILS

- Modern Classic fit
- Five pockets: patch pockets, chest pocket, accessory pocket, interior pocket for 8" tablet
- Self-covered button front closure
- Side-seam access opening
- Back belt

### AVAILABLE COLORS

WHT



## WW450AB 28" CONSULTATION LAB COAT

XXS-5XL (28")

### FABRIC

78 Poly / 20 Rayon /  
2 Spandex Twill

### PRODUCT DETAILS

- Modern Classic fit
- Four pockets: patch pockets, chest pocket, interior pocket for 8" tablet
- Utility loops
- Self-covered button front closure
- Front princess seams

### AVAILABLE COLORS

WHT



## WW350AB UNISEX 40" SNAP FRONT LAB COAT

XS-5XL (40")

### FABRIC

78 Poly / 20 Rayon /  
2 Spandex Twill

### PRODUCT DETAILS

- Unisex Modern fit
- Three pockets: chest pocket with pen slot, patch pockets
- Hidden instrument loops
- Side seam access opening
- Rib-knit neckband and cuffs

### AVAILABLE COLORS


CIE

PWT

ROY

TLB

WHT

 Certainty® antimicrobial fabric technology is integrated into the garments in this collection to help fight odors. Wash all garments thoroughly after each use. Items featuring antimicrobial technology do not protect users or others against bacteria, viruses, or disease organisms. Always follow all best practices for infection prevention. Visit [CertaintyTechnologies.com](http://CertaintyTechnologies.com) for details.

# WORKWEAR ORIGINALS

The collection that started it all remains as popular as ever, thanks to its legendary durability and value.



EASY CARE



STRONG  
& DURABLE



WORKWEAR ORIGINALS  
TOP WW4700, BOTTOM 4200  
COLOR CARIBBEAN BLUE





**4350  
SNAP FRONT  
WARM-UP JACKET**

XXS-5XL (27.5")

**FABRIC**

65 Poly / 35 Cotton Poplin  
White: 55 Cotton /  
45 Poly Poplin

**PRODUCT DETAILS**

- Traditional fit
- Snap front closure
- Two patch pockets
- Cellphone pocket
- Knit cuffs

**AVAILABLE COLORS**



**4881  
LONG SLEEVE  
UNDERSCRUB KNIT TEE**

XS-2XL (26")

**FABRIC**

95 Rayon / 5 Spandex Knit

**PRODUCT DETAILS**

- Modern Classic fit
- Crew neck
- Wear layered or on its own

**AVAILABLE COLORS**



**WW645  
V-NECK TOP**

XXS-5XL (27")

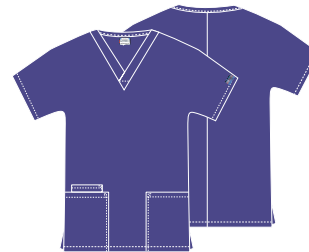
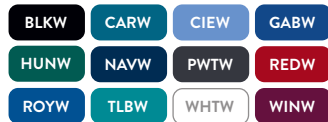
**FABRIC**

65 Poly / 35 Cotton Poplin  
White: 55 Cotton /  
45 Poly Poplin

**PRODUCT DETAILS**

- Contemporary fit
- Right pocket with exterior pocket and pen slot
- Left pocket with hidden instrument loops
- Rib-knit back panels
- Side vents

**AVAILABLE COLORS**



**4700  
V-NECK TOP**

XXS-5XL (26.5")

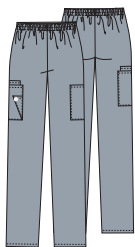
**FABRIC**

65 Poly / 35 Cotton Poplin  
White: 55 Cotton /  
45 Poly Poplin

**PRODUCT DETAILS**

- Traditional fit
- Two patch pockets
- Cellphone pocket
- Short dolman sleeves
- Side vents

**AVAILABLE COLORS**



**4200/P/T  
NATURAL RISE PULL-ON  
CARGO PANT**

XS-5XL (30")  
[P] XS-3XL (27.5")  
[T] XS-2XL (33")

**FABRIC**

65 Poly / 35 Cotton Poplin  
White: 55 Cotton /  
45 Poly Poplin

**PRODUCT DETAILS**

- Traditional fit
- Elastic waistband
- Two cargo pockets
- Cellphone pocket
- Scissors pocket
- Tapered leg, 15" opening

**AVAILABLE COLORS**



†No Tall \*No Short or Tall



**4101/P/T  
NATURAL RISE  
DRAWSTRING PANT**

XXS-3XL (31")  
[P] XXS-2XL (28.5")  
[T] XXS-3XL (34")

**FABRIC**

65 Poly / 35 Cotton Poplin  
White: 55 Cotton /  
45 Poly Poplin

**PRODUCT DETAILS**

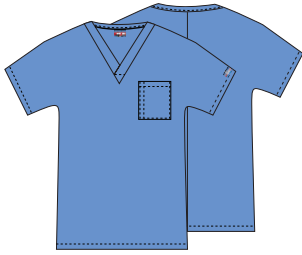
- Modern Classic fit
- Elastic back waistband
- Adjustable front drawstring
- Side angled pockets
- Back patch pocket
- Side vents
- Flare leg, 20½" opening

**AVAILABLE COLORS**



\*[T] XS-2XL

## UNISEX STYLES



### 4777 UNISEX V-NECK TUNIC

XXS-5XL (27.5")

**FABRIC**  
65 Poly/35 Cotton Poplin  
White: 55 Cotton /  
45 Poly Poplin

#### PRODUCT DETAILS

- Unisex Traditional fit
- Chest pocket with pen slot
- Dolman sleeves

#### AVAILABLE COLORS



## WORKWEAR ORIGINALS



### 4876 UNISEX V-NECK TOP

XXS-5XL (29")

**FABRIC**  
65 Poly/35 Cotton Poplin  
White: 55 Cotton /  
45 Poly Poplin

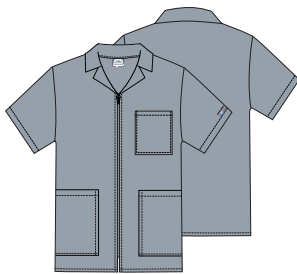
#### PRODUCT DETAILS

- Unisex Traditional fit
- Chest pocket
- Two patch pockets
- Side vents

#### AVAILABLE COLORS



## MEN'S STYLES



### 4300 MEN'S ZIP FRONT JACKET

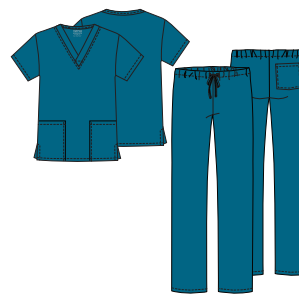
S-5XL (30.5")

**FABRIC**  
65 Poly/35 Cotton Poplin  
White: 55 Cotton/  
45 Poly Poplin

#### PRODUCT DETAILS

- Men's Traditional fit
- Chest pocket
- Two patch pockets
- Notched lapel collar

#### AVAILABLE COLORS



### WW530C UNISEX TOP AND PANT SET

XXS-5XL  
(CENTER BACK LENGTH: 28.5"  
INSEAM: 31")

**FABRIC**  
65 Poly/35 Cotton Poplin  
White: 55 Cotton/  
45 Poly Poplin

#### PRODUCT DETAILS

- Unisex Modern fit
- Three pockets: patch pockets, back pocket
- Drawstring waist
- Tapered leg, 18" opening

#### AVAILABLE COLORS



### 4100/S/T UNISEX DRAWSTRING CARGO PANT

XXS-5XL (31")  
(S) XS-3XL (28.5")  
(T) S-2XL (34")

**FABRIC**  
65 Poly/35 Cotton Poplin  
White: 55 Cotton/  
45 Poly Poplin

#### PRODUCT DETAILS

- Unisex Traditional fit
- Webbed drawstring
- Cargo pocket with inside cellphone pocket
- Back pocket
- Straight leg, 18 1/2" opening

#### AVAILABLE COLORS



\*No Short or Tall



### 4000/S/T MEN'S FLY FRONT CARGO PANT

S-5XL (31")  
(S) S-3XL (28.5")  
(T) S-2XL (36" UNHEMMED)

**FABRIC**  
65 Poly/35 Cotton Poplin  
White: 55 Cotton/ 45 Poly Poplin

#### PRODUCT DETAILS

- Men's Traditional fit
- Elastic waistband with webbed drawstring
- Zip fly front closure
- Seven pockets: front pockets, double cargo pockets, back pocket
- Tapered leg, 18" opening

#### AVAILABLE COLORS



†No Short or \*No Tall

# WORKWEAR PROFESSIONALS

This bestselling collection is popular for its ultra-soft fabric, polished styles, and wide range of colors and fits.



EASY CARE



STRONG  
& DURABLE



TWO-WAY  
STRETCH



WORKWEAR PROFESSIONALS  
TOP WW665, BOTTOM WW170  
COLOR OLIVE





**WW665  
V-NECK TOP**

XXS-5XL (26")

**FABRIC**  
63 Poly/34 Cotton/  
3 Spandex Poplin

**PRODUCT DETAILS**

- Modern Classic fit
- Three pockets: right patch pocket with interior cellphone pocket, left pocket with pen slot and instrument loop
- Back yoke
- Shirrtail hem
- Side vents

AVAILABLE COLORS



**WW340  
SNAP FRONT JACKET**

XXS-5XL (28.5")

**FABRIC**  
63 Poly/34 Cotton/  
3 Spandex Poplin

**PRODUCT DETAILS**

- Modern Classic fit
- Two patch pockets
- Right cellphone pocket
- Front and back yokes
- Rib-knit cuffs

AVAILABLE COLORS



**WW170/P/T  
MID RISE PULL-ON CARGO PANT**

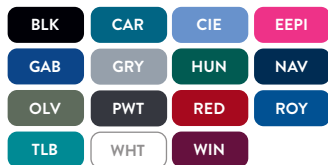
XXS-5XL (31")  
[P] XXS-2XL (28.5")  
[T] XS-2XL (34")

**FABRIC**  
63 Poly/34 Cotton/  
3 Spandex Poplin

**PRODUCT DETAILS**

- Modern Classic fit
- Elastic-reinforced rib-knit waistband
- Six pockets: front patch pockets, cargo pockets, back pockets
- Side vents
- Straight leg, 17 1/2" opening

AVAILABLE COLORS



MEN'S STYLES



**WW190/S/T  
MEN'S FLY FRONT CARGO PANT**

XS-5XL (32")  
[S] XS-3XL (29.5")  
[T] S-2XL (35")

**FABRIC**  
63 Poly/34 Cotton/ 3 Spandex Poplin

**PRODUCT DETAILS**

- Men's Traditional fit
- Elastic waistband with drawstring
- Zip fly with button closure
- Five pockets: front patch pockets, cargo pockets, back pocket
- Tapered leg, 18 1/2" opening

AVAILABLE COLORS



**WW700  
MEN'S  
UNDERSCRUB  
KNIT TOP**

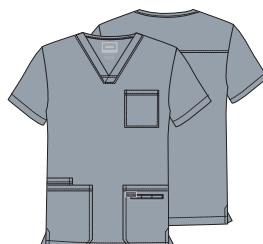
XS-2XL (29")

**FABRIC**  
95 Rayon/  
5 Spandex Knit

**PRODUCT DETAILS**

- Men's Modern fit
- Crew neck
- Long sleeves

AVAILABLE COLORS



**WW695/T  
MEN'S V-NECK TOP**

XS-5XL (29")  
[T] XS-5XL (32")

**FABRIC**  
63 Poly/34 Cotton/  
3 Spandex Poplin

**PRODUCT DETAILS**

- Men's Traditional fit
- Four pockets: chest pocket, patch pockets, cellphone pocket
- Hidden instrument loops
- Side vents

AVAILABLE COLORS



\* No Tall



**WW360  
MEN'S SNAP  
FRONT JACKET**

XS-5XL (30")

**FABRIC**  
63 Poly/34 Cotton/  
3 Spandex Poplin

**PRODUCT DETAILS**

- Men's Traditional fit
- Snap front closure
- Two patch pockets
- Right cellphone pocket
- Back yoke
- Rib-knit collar and cuffs

AVAILABLE COLORS



# WORKWEAR CORE STRETCH

Made for healthcare pros in motion, with a soft, comfy 55% - cotton blend spun with spandex for all-day stretch and comfort.



STRONG  
& DURABLE



TWO-WAY  
STRETCH



SOFT  
& FLEXIBLE



WORKWEAR CORE STRETCH  
TOP WW630, BOTTOM 4044  
COLOR PEWTER



**4315  
ZIP FRONT JACKET**

XXS-5XL (27")

**FABRIC**  
55 Cotton/42 Poly/  
3 Spandex Twill

**PRODUCT DETAILS**

- Modern Classic fit
- Three pockets: two patch pockets, sectional pocket with ID badge loop on right
- Front shoulder yokes
- Back yoke and princess seams
- Knit cuffs

**AVAILABLE COLORS**



**4727  
V-NECK TOP**

XXS-5XL (27")

**FABRIC**  
55 Cotton/42 Poly/  
3 Spandex Twill

**PRODUCT DETAILS**

- Modern Classic fit
- Crossover front yoke
- Three pockets: two patch pockets, sectional pocket with ID badge loop on right
- Back yoke and princess seams
- Side vents

**AVAILABLE COLORS**



**4728  
MOCK WRAP TOP**

XXS-5XL (27")

**FABRIC**  
55 Cotton/42 Poly/  
3 Spandex Twill

**PRODUCT DETAILS**

- Modern Classic fit
- Three pockets: two patch pockets, sectional pocket with ID badge loop on right, instrument loops on left pocket
- Front and back princess seams
- Double-needle topstitching
- Side vents

**AVAILABLE COLORS**



**WW630  
V-NECK TOP**

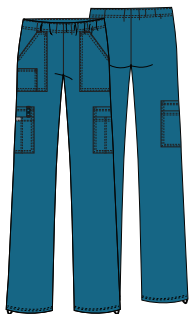
XXS-5XL (26")

**FABRIC**  
55 Cotton/42 Poly/  
3 Spandex Twill

**PRODUCT DETAILS**

- Modern Classic fit
- Three pockets: two patch pockets with pen slot on left and cellphone pocket on right; hidden instrument loops inside left pocket
- Bungee loop at neckline
- Back yoke
- Side vents

**AVAILABLE COLORS**



**4005/P/T  
MID RISE PULL-ON CARGO PANT**

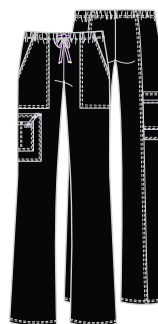
XXS-5XL (31")  
[P] XXS-2XL (28.5")  
[T] XS-2XL (34")

**FABRIC**  
55 Cotton/42 Poly/  
3 Spandex Twill

**PRODUCT DETAILS**

- Modern Classic fit
- Elastic waistband
- Seven pockets: two front patch pockets, small front right patch pocket, double cargo pockets
- ID badge loop and pen slot on right cargo pockets
- Adjustable bungee at leg opening
- Straight leg, 19½" opening

**AVAILABLE COLORS**



**4044/P/T  
MID RISE DRAWSTRING CARGO PANT**

XXS-5XL (31")  
[P] XXS-2XL (28.5")  
[T] XS-2XL (34")

**FABRIC**  
55 Cotton/42 Poly/  
3 Spandex Twill

**PRODUCT DETAILS**

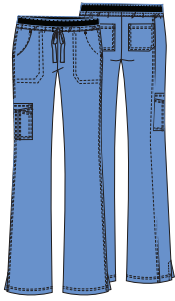
- Modern Classic fit
- Elastic waistband with drawstring
- Four pockets: two front patch pockets, cargo pocket, sectional pocket on cargo pocket with ID badge loop
- Back leg seam
- Flare leg, 20½" leg opening

**AVAILABLE COLORS**



Fashion (available while supplies last)





**24001/P/T  
DRAWSTRING CARGO PANT**

XXS-3XL (31")  
 (PI) XXS-2XL (28.5")  
 (TI) XS-2XL (34")

**FABRIC**  
 55 Cotton/42 Poly/  
 3 Spandex Twill

**PRODUCT DETAILS**

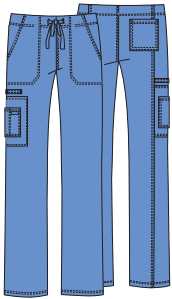
- Contemporary fit
- Lower rise with elastic knit waistband
- Six pockets: two front patch pockets, double cargo pocket on right side, two back patch pockets
- Outer cargo pocket features sectional design
- Double-needle topstitching
- Back leg seam, side vents
- Flare leg, 20½" opening

**AVAILABLE COLORS**



\* No Tall

**UNISEX STYLES**



**4043  
UNISEX DRAWSTRING  
CARGO PANT**

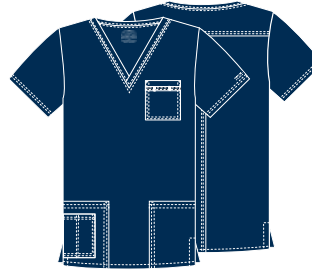
XS-5XL (31")

**FABRIC**  
 55 Cotton/42 Poly/  
 3 Spandex Twill

**PRODUCT DETAILS**

- Unisex Traditional fit
- Five pockets: two front pockets, cargo pocket with sectional pocket on right, back patch pocket
- Instrument loops above cargo pocket
- Straight leg, 20½" opening

**AVAILABLE COLORS**



**4725  
UNISEX V-NECK TOP**

XS-5XL (28")

**FABRIC**  
 55 Cotton/42 Poly/  
 3 Spandex Twill

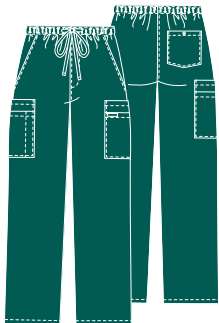
**PRODUCT DETAILS**

- Unisex Traditional fit
- Four pockets: chest pocket with instrument loops, two patch pockets with sectional pocket on right
- Back yoke
- Side vents

**AVAILABLE COLORS**



**MEN'S STYLES**



**4243  
MEN'S FLY FRONT CARGO PANT**

XS-5XL (31")

**FABRIC**  
 55 Cotton/42 Poly/  
 3 Spandex Twill

**PRODUCT DETAILS**

- Men's Traditional fit
- Elastic waistband with drawstring
- Zip fly front closure
- Seven pockets: two front pockets, double cargo pockets, back pocket with button closure
- Tapered leg, 18" opening

**AVAILABLE COLORS**



**4743  
MEN'S V-NECK TOP**

XS-5XL (29")

**FABRIC**  
 55 Cotton/42 Poly/  
 3 Spandex Twill

**PRODUCT DETAILS**

- Men's Traditional fit
- Double chest pocket with pen slot
- Back yoke
- Double-needle topstitching
- Side vents

**AVAILABLE COLORS**



# ALLURA

PROTECTED PRODUCT | NOT ON AMAZON | NEVER OFF-MAP

The allure of this collection, besides its group-friendly style and super-inclusive size range? Your store won't lose sales to Amazon.



360°  
STRETCH



EASY CARE



MOISTURE  
WICKING

NEW  
COLOR





left page,  
**ALLURA**  
TOP CKA685, BOTTOM CKA184,  
COLOR SAGE HEATHER

This page,  
VEST CKA570, BOTTOM CKA184,  
COLOR NAVY





**CKA672  
STYLIZED ROUND NECK TOP**

XS-3XL (25")

**FABRIC**  
90 Poly/ 10 Spandex Poplin

**PRODUCT DETAILS**

- Contemporary fit
- Decorative triple-needle stitching at neckline
- Front chest seam with subtle cutout
- Multi-needle stitching along chest seams
- Three pockets: two side entry pockets, back zipper pocket
- Back princess seams
- Shirttail hem

**AVAILABLE COLORS**



**CKA384  
ZIP FRONT JACKET**

XXS-5XL (27")

**FABRIC**  
90 Poly/ 10 Spandex Poplin

**PRODUCT DETAILS**

- Contemporary fit
- Four pockets: two front patch pockets, interior cellphone pocket on right, back zip pocket
- Front yoke seams
- Front and back princess seams
- Rib-knit cuffs

**AVAILABLE COLORS**



**CKA684  
V-NECK TOP**

XXS-5XL (26")

**FABRIC**  
90 Poly/ 10 Spandex Poplin

**PRODUCT DETAILS**

- Contemporary fit
- Three pockets: two front angled patch pockets, zip cellphone pocket on right
- Front and back princess seams
- Back shoulder yokes
- Side vents

**AVAILABLE COLORS**



**CKA685  
V-NECK TOP**

XXS-5XL (26")

**FABRIC**  
90 Poly/ 10 Spandex Poplin

**PRODUCT DETAILS**

- Contemporary fit
- Three pockets: two front patch pockets, zip cellphone pocket on the right
- Front and back yoke seams
- Front side panels
- Bungee ID badge loop
- Shirttail hem
- Side vents

**AVAILABLE COLORS**



**CKA688  
MOCK WRAP TOP**

XXS-5XL (26")

**FABRIC**  
90 Poly/ 10 Spandex Poplin

**PRODUCT DETAILS**

- Contemporary fit
- Three pockets: two front patch pockets, utility pocket on right
- Front yoke seams
- Back princess seams
- Shirttail hem
- Side vents

**AVAILABLE COLORS**



**CKA690  
TUCKABLE V-NECK TOP**

XXS-5XL (26.5")

**FABRIC**  
90 Poly/ 10 Spandex Poplin

**PRODUCT DETAILS**

- Contemporary fit
- Two pockets: chest pocket, back zip pocket
- Front yoke seams
- Back princess seams
- Rounded high-low hem
- Side vents

**AVAILABLE COLORS**



**CKA570  
ZIP FRONT QUILTED VEST**

XS-XL (26")

**FABRIC**  
90 Poly/ 10 Spandex Poplin

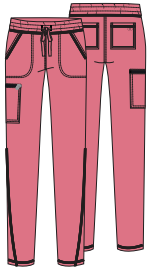
**PRODUCT DETAILS**

- Contemporary fit
- Covered placket with full zipper
- Rib-knit stand-up collar
- Two welt pockets
- Adjustable bungee front waistband
- Non-quilted back yoke panel
- Elastic binding at placket edge, armholes, and hem

**AVAILABLE COLORS**



Fashion (available while supplies last)



**CKA184/P/T  
MID RISE DRAWSTRING  
CARGO PANT**

XXS-5XL (29")  
[P] XXS-2XL (26.5)  
[T] XS-2XL (32")

**FABRIC**  
90 Poly/ 10 Spandex Poplin

**PRODUCT DETAILS**

- Contemporary fit
- Interior elastic waistband
- Five pockets: two angled front pockets, zip cargo pocket, two back
- Forward-wrapping side seam
- Tapered leg, 14" opening



**CKA190/P/T  
PULL-ON JOGGER**

XXS-5XL (28.5")  
[P] XXS-2XL (26")  
[T] XS-2XL (31.5")

**FABRIC**  
90 Poly/ 10 Spandex Poplin

**PRODUCT DETAILS**

- Contemporary fit
- Elastic-reinforced rib-knit waistband with interior drawstring
- Five pockets: two front, zip cargo pocket, two back
- Rib-knit cuffs
- Tapered leg, 9" opening

**AVAILABLE COLORS**



WIN \* XS-3XL, [P] XS-2XL, No Tall

**NEW COLOR**



**AVAILABLE COLORS**



**MEN'S STYLES**



**CKA387  
MEN'S ZIP FRONT JACKET**

XS-5XL (28")

**FABRIC**  
90 Poly/ 10 Spandex Poplin

**PRODUCT DETAILS**

- Men's Modern fit
- Two patch pockets
- Stand-up collar
- Zip front closure
- Bungee ID badge loop
- Knit cuffs

**AVAILABLE COLORS**



**CKA686  
MEN'S V-NECK TOP**

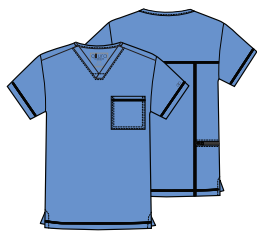
XS-5XL (28")

**FABRIC**  
90 Poly/ 10 Spandex Poplin

**PRODUCT DETAILS**

- Men's Modern fit
- Three pockets: chest pocket, two front patch pockets
- Bungee ID badge loop
- Back yoke seam
- Side vents

**AVAILABLE COLORS**



**CKA689  
MEN'S TUCKABLE  
V-NECK TOP**

XS-5XL (28")

**FABRIC**  
90 Poly/ 10 Spandex Poplin

**PRODUCT DETAILS**

- Men's Modern fit
- Two pockets: chest pocket, back zip security pocket
- Back yoke seam
- Side vents

**AVAILABLE COLORS**



**CKA186/S/T  
MEN'S FLY FRONT  
CARGO PANT**

XS-5XL (32")  
[S] XS-2XL (29.5")  
[T] XS-2XL (35")

**FABRIC**  
90 Poly/ 10 Spandex Poplin

**PRODUCT DETAILS**

- Men's Modern fit
- Elastic-reinforced waistband with inside drawstring
- Zip fly with button closure
- Five pockets: two front pockets, zip cargo pocket, two back patch pockets
- Bungee ID badge loop
- Straight leg, 16" opening

**AVAILABLE COLORS**



**CKA189/S/T  
MEN'S MID  
RISE JOGGER**

XS-5XL (30.5")  
[S] XS-2XL (28")  
[T] XS-2XL (33.5")

**FABRIC**  
90 Poly/ 10 Spandex Poplin

**PRODUCT DETAILS**

- Men's Modern fit
- Elastic-reinforced rib-knit waistband with drawstring
- Six pockets: two front pockets, zip cargo pocket, patch cargo pocket, two back pockets
- Rib-knit cuffs
- Tapered leg, 10" opening

**AVAILABLE COLORS**



# ALLURA SELECT

PROTECTED PRODUCT | NOT ON AMAZON | NEVER OFF-MAP

The latest iteration of our wildly popular Allura line, this collection is reserved for our top-tier brick-and-mortar retailers, and not on Amazon.



360°  
STRETCH



MOISTURE  
WICKING



EASY CARE



SOFT  
& FLEXIBLE



STRONG  
& DURABLE



40% RECYCLED  
POLY



ALLURA SELECT  
TOP CKA667, BOTTOM CKA167,  
COLOR CAYENNE





**CKA319  
ZIP FRONT JACKET**

XS-3XL (24")

**FABRIC**  
48 Poly / 40 Recycled Poly /  
12 Spandex Twill

**PRODUCT DETAILS**

- Contemporary fit
- Funnel collar with 3/4 rib-knit neckline
- Four pockets: chest welt pocket, two front welt pockets, hidden interior pocket on right
- Yoke seams on front, back, and back center
- Binding on sleeve and bottom rounded hem

**AVAILABLE COLORS**



**CKA667  
MITERED V-NECK TOP**

XS-3XL (25")

**FABRIC**  
48 Poly / 40 Recycled Poly /  
12 Spandex Twill

**PRODUCT DETAILS**

- Contemporary fit
- Rib-knit neckline
- Welt chest pocket
- Back princess seams
- Side vents
- Rounded hem

**AVAILABLE COLORS**



**CKA669  
STYLIZED V-NECK TOP**

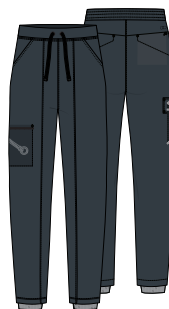
XS-3XL (25.5")

**FABRIC**  
48 Poly / 40 Recycled Poly /  
12 Spandex Twill

**PRODUCT DETAILS**

- Contemporary fit
- Rib-knit neckline
- Bungee ID badge loop
- Three pockets: two angled front pockets, hidden interior pocket on right
- Security ring clasp with bungee in hidden pocket
- Side vents
- High-low hemline

**AVAILABLE COLORS**



**CKA167/P  
MID RISE JOGGER**

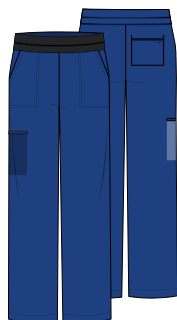
XS-2XL (28.5")  
[P] XS-3XL (26")

**FABRIC**  
48 Poly / 40 Recycled Poly /  
12 Spandex Twill

**PRODUCT DETAILS**

- Contemporary fit
- Interior elastic waistband with rib-knit on back and exterior drawstring
- Four pockets: two front angled pockets, in-seam back zip pocket, cargo pocket
- Security ring clasp with bungee in cargo pocket
- Front leg seams
- Rib-knit inset cuffs
- Tapered leg, 8 1/2" opening

**AVAILABLE COLORS**



**CKA169/P  
MID RISE PANT**

XS-3XL (30.5")  
[P] XS-2XL (28")

**FABRIC**  
48 Poly / 40 Recycled Poly /  
12 Spandex Twill  
(with moisture wicking)

**PRODUCT DETAILS**

- Contemporary fit
- Interior elastic rib-knit waistband with inside drawstring
- Four pockets: two front angled pockets, back patch pocket, welt zip cargo pocket
- Wide leg, 21 1/2" opening

**AVAILABLE COLORS**



# IFLEX

With lightweight, ultra stretchy fabric and rib knit at key motion zones, iFlex is made for pros in motion.



360°  
STRETCH



MOISTURE  
WICKING



KNIT  
PANELS



IFLEX  
TOP CK605, BOTTOM CK011,  
COLOR NAVY



**CK303  
ZIP FRONT JACKET**

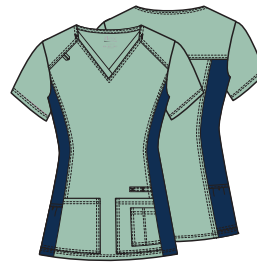
XXS-5XL (26")

**FABRIC**  
94 Poly / 6 Spandex  
Crosshatch Dobby

**PRODUCT DETAILS**

- Contemporary fit
- Two welt pockets
- Knit cuffs, waistband, and front side panels
- Instrument loops
- Front shoulder yokes and back curved yoke
- Front and back princess seams
- Locker loop

**AVAILABLE COLORS**



**CK605  
V-NECK KNIT PANEL TOP**

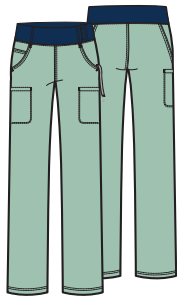
XXS-5XL (26")

**FABRIC**  
94 Poly / 6 Spandex  
Crosshatch Dobby

**PRODUCT DETAILS**

- Contemporary fit
- Four pockets: two front patch pockets, accessory pocket, back pocket
- Instrument loops
- Locker loop on back yoke
- Front shoulder yokes with ID badge loop
- Knit side panels and knit trim at v-neck
- Front and back princess seams

**AVAILABLE COLORS**



**CK002/P/T  
MID RISE PULL-ON PANT**

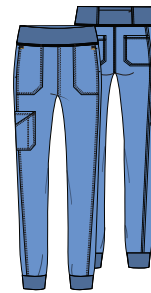
XXS-5XL (31")  
[P] XXS-2XL (28.5")  
[T] XS-2XL (34")

**FABRIC**  
94 Poly / 6 Spandex  
Crosshatch Dobby

**PRODUCT DETAILS**

- Contemporary fit
- Six pockets: two round pockets, two interior, two welt cargo pockets
- Knit waistband with inside elastic, hidden pocket
- Logo tape with plastic key clasp inside left pocket
- Bungee cord at leg hem
- Straight leg, 17" opening

**AVAILABLE COLORS**



**CK011/P  
MID RISE JOGGER**

XXS-3XL (29")  
[P] XXS-2XL (27.5")

**FABRIC**  
94 Poly / 6 Spandex  
Crosshatch Dobby

**PRODUCT DETAILS**

- Contemporary fit
- Elastic-reinforced knit waistband
- Seven pockets: two front pockets, double utility cargo pocket with pen slot, two back pockets, security zipper pocket in back waistband
- Front and back leg seams
- Knit cuffs
- Tapered leg, 9" opening

**AVAILABLE COLORS**





# FORM

For those who demand the ultimate in luxury and performance, form delivers an elevated aesthetic, meticulous design details, and the most advanced knit fabric in the industry.



360°  
STRETCH



EASY CARE



MOISTURE  
WICKING



This page,  
**FORM**  
TOP CK840,  
COLOR LAVENDER HAZE

Opposite page,  
TOP CK840, BOTTOM CK095,  
JACKET CK390  
COLOR LAVENDER HAZE

NEW  
COLOR





**CK390  
ZIP FRONT JACKET**

XXS-3XL (26")

**FABRIC**  
86 Nylon/  
14 Spandex Knit

**PRODUCT DETAILS**

- Contemporary fit
- Two front zip pockets
- Power mesh insets on sleeves
- Power mesh racerback panel
- Shirttail hem
- Antique-copper hardware

**AVAILABLE COLORS**



**NEW COLOR**



\* XS-3XL



**CK819  
TUCKABLE V-NECK TOP**

XXS-3XL (25")

**FABRIC**  
86 Nylon/  
14 Spandex Knit

**PRODUCT DETAILS**

- Contemporary fit
- Power mesh trim on neckband
- Welt chest pocket
- Back princess seams
- Shirttail hem
- Wear tucked or untucked
- Antique-copper hardware

**AVAILABLE COLORS**



**NEW COLOR**



\* XS-3XL



**CK840  
V-NECK TOP**

XXS-3XL (26")

**FABRIC**  
86 Nylon/  
14 Spandex Knit

**PRODUCT DETAILS**

- Contemporary fit
- Two welt pockets
- Power mesh trim on neckband and sleeve hems
- Back princess seams
- Shirttail hem
- Antique-copper hardware

**AVAILABLE COLORS**



**NEW COLOR**



\* XS-3XL



**CK843  
V-NECK TOP**

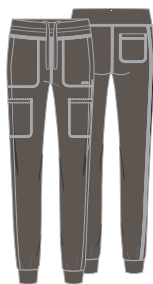
XXS-3XL (26")

**FABRIC**  
86 Nylon/  
14 Spandex Knit

**PRODUCT DETAILS**

- Contemporary fit
- Power mesh inset at neckline
- Two zipper pockets
- Front princess seams
- Rounded hem with power mesh inset at bottom of side seam
- Antique-copper hardware

**AVAILABLE COLORS**



**CK092/P/T  
MID RISE JOGGER**

XXS-3XL (28.5")  
[P] XXS-2XL (26")  
[T] XS-2XL (31.5")

**FABRIC**  
86 Nylon/  
14 Spandex Knit

**PRODUCT DETAILS**

- Contemporary fit
- Elastic-reinforced waistband with inside drawstring
- Six pockets: two front zipper in-seam pockets, two welt cargo pockets (right with additional mesh patch pocket), back patch pocket
- Knit cuffs
- Tapered leg, 9" opening

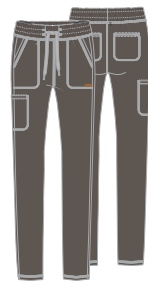
**AVAILABLE COLORS**



**NEW COLOR**



XS-3XL, [P] XS-2XL, No Tall



**CK095/P/T  
MID RISE  
DRAWSTRING PANT**

XXS-3XL (29")  
[P] XXS-2XL (26.5")  
[T] XS-2XL (32")

**FABRIC**  
86 Nylon/  
14 Spandex Knit

**PRODUCT DETAILS**

- Contemporary fit
- Five pockets: two angled front pockets, zip cargo pocket, two back zip pockets
- Encased elastic waistband
- Tapered leg, 9 1/2" opening
- Antique-copper hardware

**AVAILABLE COLORS**



**NEW COLOR**



XS-3XL, [P] XS-2XL, No Tall

Fashion (available while supplies last)





**CK399**  
**MEN'S ZIP FRONT JACKET**

XS-3XL (27.5")

**FABRIC**  
86 Nylon /  
14 Spandex Knit

**PRODUCT DETAILS**

- Men's Modern fit
- Stand-up collar
- Four pockets: zipper chest pocket, two welt pockets, hidden mesh cellphone pocket inside right pocket
- Sleeve seams and stylized front seams
- Curved back yoke and back seams
- Cuffs and banded bottom
- Antique-copper hardware

**AVAILABLE COLORS**



**CK885**  
**MEN'S V-NECK TOP**

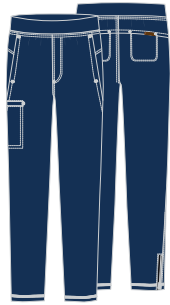
XS-3XL (28")

**FABRIC**  
86 Nylon /  
14 Spandex Knit

**PRODUCT DETAILS**

- Men's Modern fit
- Chest pocket
- Front and back yokes
- Angled back side seams
- Underarm power mesh panels
- Hidden power mesh inset at back yoke
- Antique-copper hardware

**AVAILABLE COLORS**



**CK185**  
**MEN'S PULL-ON CARGO PANT**

XS-3XL (31")

**FABRIC**  
86 Nylon /  
14 Spandex Knit

**PRODUCT DETAILS**

- Men's Modern fit
- Encased elastic waistband
- Mock fly
- Five pockets: two angled front pockets, zip cargo pocket, two back in-seam pockets
- Curved back yoke
- Reflective piping at zipper vents
- Tapered leg, 14½" opening
- Antique-copper hardware

**AVAILABLE COLORS**



# CHEROKEE PRINTS

When it comes to prints, Cherokee is king. Like always, we have a fresh selection of designs to please every personality and passion.

NEW  
STYLE



CHEROKEE PRINTS  
TOP CK664,  
COLOR SH60

## BABY-SAUR LOVE (BBSV) NEW

97 Cotton / 3 Spandex Poplin



**CK652**  
XS-3XL (26")



COORDINATING COLORS:



## BERRY GOOD CARE (BGCR) NEW

52 Recycled Polyester / 40 Polyester /  
8 Spandex Poplin



**CK792**  
XXS-5XL (25.5")

CONTRAST COLOR: NAVY



COORDINATING COLORS:



## BLOOMING BUGS (BMUG) NEW

52 Recycled Polyester / 40 Polyester /  
8 Spandex Poplin



**CK678**  
XS-5XL (26")

CONTRAST COLOR: NAVY



COORDINATING COLORS:



## BOTANICS IN BLOOM (BOTB) NEW

52 Recycled Polyester / 40 Polyester /  
8 Spandex Poplin



**CK688**  
XS-3XL (26")

CONTRAST COLOR: OLIVE



COORDINATING COLORS:



## CALMING CRITTERS (CLCT) NEW

52 Recycled Polyester / 40 Polyester /  
8 Spandex Poplin



**CK637**  
XS-3XL (26")

COORDINATING COLORS:



## CARE FOR THE CAUSE (CFTC) NEW

52 Recycled Polyester / 40 Polyester /  
8 Spandex Poplin



**CK664**  
XS-3XL (26")

COORDINATING COLORS:





**CALMA LLAMA (CLMA) NEW**

52 Recycled Polyester / 40 Polyester / 8 Spandex Poplin



**CK794**  
XXS-5XL (25")

CONTRAST COLOR:  
PEWTER



COORDINATING COLORS:



**CK321**  
XXS-5XL (28.5")

CONTRAST COLOR:  
BLACK RIB



COORDINATING COLORS:



**DENTAL LIFE (DTLF) NEW**

52 Recycled Polyester / 40 Polyester / 8 Spandex Poplin



**CK662**  
XXS-5XL (26")



COORDINATING COLORS:



**DIFFERENT IS AU-SOME (DIAW) NEW**

52 Recycled Polyester / 40 Polyester / 8 Spandex Poplin



**CK671**  
XXS-5XL (26")



COORDINATING COLORS:



**CK513**  
OS

CONTRAST:  
PEWTER SWEATBAND



**FELINE FRIENDLY (FIFY) NEW**

52 Recycled Polyester / 40 Polyester / 8 Spandex Poplin



**CK678**  
XXS-5XL (26")



CONTRAST COLOR:  
BLACK

COORDINATING COLORS:



## FLORAL FLASHBACK (FLFB) **NEW**

52 Recycled Polyester / 40 Polyester / 8 Spandex Poplin



**CK793**  
XS-5XL (26")

CONTRAST COLOR:  
BLACK



COORDINATING COLORS:



## GARDEN RAINBOW (GRRB) **NEW**

52 Recycled Polyester / 40 Polyester / 8 Spandex Poplin



**CK703**  
XXS-5XL (26")

COORDINATING COLORS:



**CK514**  
OS

CONTRAST:  
PEWTER SWEATBAND



## KOALA'S CARE (KLCR) **NEW**

97 Cotton / 3 Spandex Poplin



**CK652**  
XXS-5XL (26")

COORDINATING COLORS:



## LAB PURR-TNERS (LBPT) **NEW**

52 Recycled Polyester / 40 Polyester / 8 Spandex Poplin



**CK637**  
XS-3XL (26")

COORDINATING COLORS:



## LOVING PETALS (LGPT) **NEW**

52 Recycled Polyester / 40 Polyester / 8 Spandex Poplin



**CK671**  
XS-3XL (26")

COORDINATING COLORS:





**MARKER LEOPARD (MRLP) NEW**

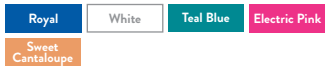
52 Recycled Polyester / 40 Polyester / 8 Spandex Poplin



CK671  
XS-3XL (26")



COORDINATING COLORS:



**MINERAL WAVES (MLWV) NEW**

97 Cotton / 3 Spandex Poplin



CK691  
XS-5XL (28")



COORDINATING COLORS:



CK513  
OS



CONTRAST:  
PEWTER SWEATBAND

**OWL TOGETHER NOW (OWTN) NEW**

52 Recycled Polyester / 40 Polyester / 8 Spandex Poplin



CK703  
XS-3XL (26")



COORDINATING COLORS:



**PAINTED POP (PDPO) NEW**

52 Recycled Polyester / 40 Polyester / 8 Spandex Poplin



CK637  
XS-3XL (26")



COORDINATING COLORS:



**PAISLEY PUNCH (PYPN) NEW**

52 Recycled Polyester / 40 Polyester / 8 Spandex Poplin



CK678  
XS-3XL (26")



CONTRAST:  
NAVY

COORDINATING COLORS:





# CHEROKEE PRINTS

## POOL PAW-RTY (PWRY) **NEW**

52 Recycled Polyester / 40 Polyester /  
8 Spandex Poplin



**CK664**  
XS-5XL (26")



COORDINATING COLORS:



## PYTHON PERFECTION (PYTP) **NEW**

52 Recycled Polyester / 40 Polyester /  
8 Spandex Poplin



**CK703**  
XS-3XL (26")



COORDINATING COLORS:



## SWEETHEART GEO (SHGO) **NEW**

52 Recycled Polyester / 40 Polyester /  
8 Spandex Poplin



**CK664**  
XS-5XL (26")



COORDINATING COLORS:



## YOU'RE THE ZEST! (YRTZ) **NEW**

52 Recycled Polyester / 40 Polyester /  
8 Spandex Poplin



**CK671**  
XS-3XL (26")



COORDINATING COLORS:



### ARTFUL BLOOMS (ARBM)

52 Recycled Polyester / 40 Polyester /  
8 Spandex



CK678  
XS-3XL (26")



COORDINATING COLORS:

Black	Caribbean Blue	Olive Branch	Pewter
Red	White	Wine	

### BRILLIANT BOTANICALS (BIBT)

52 Recycled Polyester / 40 Polyester /  
8 Spandex



CK664  
XS-5XL (26")



COORDINATING COLORS:

Black	Bright Violet	Electric Pink	Pewter
White			

### CONFETTI DAISIES (CFDA)

52 Recycled Poly / 40 Poly / 8 Spandex Poplin



CK688  
XS-5XL (26")



COORDINATING COLORS:

Black	Electric Pink	Navy	Royal
Sparkling Jade	Turquoise	White	



CK513  
OS



### GIVE THANKS (OGGT)

52 Recycled Polyester / 40 Polyester / 8 Spandex



CK703  
XXS-5XL (26")



COORDINATING COLORS:

Black	Espresso	Hunter	Khaki
Red	Sparkling Jade	White	

## HAPPY AS A QUOKKA (HAQA)

97 Cotton / 3 Spandex Poplin



CK652  
XS-3XL (26")



COORDINATING COLORS:

Black	Khaki	Pewter	Royal
Shocking Pink	Teal Blue	Turquoise	White

## HEARTBEAT (HRTB)

Brushed 65 Polyester / 35 Cotton Poplin



759  
XS-5XL (28")



COORDINATING COLORS:

Ciel	Grape	Khaki	Navy
Raspberry	Real Teal	White	

## HERD THAT (HETA)

52 Recycled Polyester / 40 Polyester / 8 Spandex



CK637  
XS-3XL (26")



COORDINATING COLORS:

Black	Pewter	Royal	White
-------	--------	-------	-------

## HOPPY TO HELP (HTHP)

52 Recycled Poly / 40 Poly / 8 Spandex Poplin



CK671  
XS-5XL (26")



COORDINATING COLORS:

Black	Caribbean Blue	Hunter	Red
Sparkling Jade	Teal Blue	Turquoise	White



CK514  
OS





## LOVING STARS (LVSS)

52 Recycled Poly / 40 Poly / 8 Spandex Poplin



CK703  
XXS-5XL (26")



CK321  
XXS-5XL (28 1/2")



CK513  
OS



COORDINATING COLORS:



## MEOWY CHRISTMOUSE (MWCM)

97 Cotton / 3 Spandex Poplin



CK616  
XXS-5XL (26")



CK301  
XXS-5XL (28")



COORDINATING COLORS:



**NEED MY SPACE (NMSP)**

97 Cotton / 3 Spandex Poplin



**CK692**  
XS-5XL (28.5")



COORDINATING COLORS:



**WILD ABSTRACT (WDAB)**

52 Recycled Polyester / 40 Polyester /  
8 Spandex



**CK662**  
XS-3XL (26")



COORDINATING COLORS:



**SNOW BUNNY LIKE U (SOBK)**

52 Recycled Polyester / 40 Polyester /  
8 Spandex



**CK637**  
XS-3XL (26")



COORDINATING COLORS:



**SPOOKTACULAR SLOTHS (SUSO)**

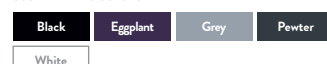
52 Recycled Polyester / 40 Polyester /  
8 Spandex



**CK671**  
XXS-5XL (26")



COORDINATING COLORS:



## LOVE FLOWERS (MNFV) NEW

52 Recycled Polyester / 40 Polyester / 8 Spandex Poplin



Packable jacket.



(MNSCT)



TF787  
XXS-5XL (26")



TF320  
XXS-5XL (23.5")



COORDINATING COLORS:



## HIGH FLYING CIRCUS (DUFH) NEW

52 Recycled Polyester / 40 Polyester / 8 Spandex Poplin



TF736  
XS-3XL (26")



COORDINATING COLORS:



## MIX AND MATCH (MKPM) NEW

52 Recycled Polyester / 40 Polyester / 8 Spandex Poplin



NEW  
THE ORIGINAL (MKTOR)



TF740 - MEN'S  
XS-5XL (29")  
CONTRAST COLOR:  
BLACK



COORDINATING COLORS:



## MINNIE LOVE (MKVE) NEW

52 Recycled Polyester / 40 Polyester / 8 Spandex Poplin



TF783  
XS-3XL (26")  
CONTRAST COLOR:  
BLACK



COORDINATING COLORS:





## DRAGON FLOWER (VIDF) NEW

52 Recycled Polyester / 40 Polyester /  
8 Spandex Poplin



TF737  
XXS-5XL (26")



COORDINATING COLORS:



## GARDEN STROLL (MKRG) NEW

97 Cotton / 3 Spandex Poplin



TF686  
XS-3XL (26")  
CONTRAST COLOR:  
TEAL BLUE



COORDINATING COLORS:



## BOTHER FREE (PHFE) NEW

52 Recycled Polyester / 40 Polyester /  
8 Spandex Poplin



TF614  
XS-3XL (26")  
CONTRAST COLOR:  
PEWTER



COORDINATING COLORS:



## CARRIAGE RIDE (PRGM) NEW

52 Recycled Polyester / 40 Polyester /  
8 Spandex Poplin



TF641  
XS-3XL (26")



COORDINATING COLORS:



## PAPER ALICE (ALPA) NEW

97 Cotton / 3 Spandex Poplin



TF756  
XS-3XL (26")



COORDINATING COLORS:



## ANGELIC FEELING (LHAF) NEW

97 Cotton / 3 Spandex Poplin



TF769  
XXS-5XL (25.5")  
CONTRAST COLOR:  
CARMINE PINK



COORDINATING COLORS:



## WORLD OF MAGIC (TBWM) NEW

52 Recycled Polyester / 40 Polyester / 8 Spandex



**TF761**  
XXS-5XL (26")



**TF514**  
(ONE SIZE)  
CONTRAST COLOR:  
PEWTER



COORDINATING COLORS:



## SWEET MCSTUFFINS (DCSM) NEW

52 Recycled Polyester / 40 Polyester / 8 Spandex



**TF780**  
XXS-3XL (26")  
CONTRAST COLOR:  
BLACK



**TF514**  
(ONE SIZE)  
CONTRAST COLOR:  
PEWTER



COORDINATING COLORS:



## FAWNED OF BUTTERFLIES (BAFO) NEW

52 Recycled Polyester / 40 Polyester / 8 Spandex



## NEW BEST FRIENDS (BABFR)



**TF772**  
XS-3XL (26")



COORDINATING COLORS:



## BIG MINNIE (MKBM) R

100 Cotton



**6625C**  
XS-3XL (27.5")  
CONTRAST COLOR:  
RED



COORDINATING COLORS:



**6875C**  
XS-3XL (24.5")  
CONTRAST COLOR:  
BLACK







# PIXAR



# TOONIFORMS

## MICKEY (MKMK) R

100 Cotton



6875C  
XS-5XL (24.5")  
CONTRAST COLOR:  
BLACK



COORDINATING COLORS:



Disney elements © Disney

## ADVENTURE (UPAD) NEW

52 Recycled Polyester / 40 Polyester /  
8 Spandex



TF776  
XS-3XL (26")



COORDINATING COLORS:



© Disney/Pixar

## BREAKIN' THRU (DPKT) NEW

52 Recycled Polyester / 40 Polyester / 8 Spandex



TF688 UNISEX  
XS-5XL (29")



COORDINATING COLORS:



TF513  
(ONE SIZE)  
CONTRAST COLOR:  
PEWTER



© Universal City Studios LLC. All Rights Reserved.



## RUV IS IN THE AIR (SDVU) NEW

52 Recycled Polyester / 40 Polyester /  
8 Spandex



TF659  
XS-3XL (26")  
CONTRAST COLOR:  
BLACK



COORDINATING COLORS:



SCOOBY-DOO and all related characters and  
elements © & TM Hanna-Barbera (s24)



## MAGICAL CAT (SEGM) NEW

52 Recycled Polyester / 40 Polyester /  
8 Spandex



TF737  
XXS-3XL (26")



COORDINATING COLORS:



TM & © 2024 Dr. Seuss Enterprises, L.P.



## HAPPIER CAMPER (OGHC) NEW

52 Recycled Polyester / 40 Polyester /  
8 Spandex



TF738  
XXS-5XL (26")



COORDINATING COLORS:



© Dog is Good, LLC



# PEANUTS

## WOODSTOCK SPIRIT (PNWW) NEW

52 Recycled Polyester / 40 Polyester / 8 Spandex



**TF626**  
XS-3XL (26")  
CONTRAST COLOR:  
BLACK



COORDINATING COLORS:



© 2024 Peanuts Worldwide LLC

## LOVE STINKS (PNVT) NEW

52 Recycled Polyester / 40 Polyester / 8 Spandex



**TF632**  
XXS-3XL (26")  
CONTRAST COLOR:  
BLACK



COORDINATING COLORS:



**TF513**  
(ONE SIZE)  
CONTRAST COLOR:  
PEWTER



# LOONEY TUNES

## ELECTRIC TWEETY (LTET) NEW

97 Cotton / 3 Spandex



**TF776**  
XXS-3XL (26")



COORDINATING COLORS:



LOONEY TUNES and all related characters and elements © & ™ WBEI. (s24)

# FRIENDS

## COFFEE TIME (IECT) NEW

52 Recycled Polyester / 40 Polyester / 8 Spandex



**TF738**  
XXS-3XL (26")



COORDINATING COLORS:



FRIENDS and all related characters and elements © & ™ Warner Bros. Entertainment Inc. WB SHIELD: © & ™ WBEI. (s24)

# THE SECRET LIFE OF PETS 2

## HAPPY PLACE (PHTP) NEW

52 Recycled Polyester / 40 Polyester / 8 Spandex



**TF687 UNISEX**  
XS-5XL (28")



COORDINATING COLORS:



The Secret Life of Pets 2 and related characters are trademarks and copyrights of Universal Studios.



**YUMMY SWEETS (HKMS) NEW**

52 Recycled Polyester / 40 Polyester / 8 Spandex



**TF786**  
XXS-5XL (25")



COORDINATING COLORS:



© 2024 SANRIO CO., LTD. Used Under License.



**HAPPY KEROPPI (KPHK) NEW**

52 Recycled Polyester / 40 Polyester / 8 Spandex



**TF787**  
XXS-3XL (26")



COORDINATING COLORS:



© 2024 SANRIO CO., LTD. Used Under License.

**NEW**  
**YUM YUM YUM (HKYUM)**



**TF513**  
(ONE SIZE)  
CONTRAST COLOR:  
PEWTER



**123**  
**SESAME STREET**

**FINGER PAINT (SWFG) NEW**

52 Recycled Polyester / 40 Polyester / 8 Spandex



**TF738**  
XS-3XL (26")



COORDINATING COLORS:



**OSCAR'S TREASURES (SWCL) NEW**

52 Recycled Polyester / 40 Polyester / 8 Spandex



**TF671**  
XXS-3XL (26")  
CONTRAST COLOR:  
PEWTER



COORDINATING COLORS:



Sesame Street® and associated characters, trademarks and design elements are owned and licensed by Sesame Workshop. © 2024 Sesame Workshop. All Rights Reserved.



# PROJECT LAB

Looking fab in the lab is easy with this top-shelf collection of styles in women's, men's, and unisex fits.



CHEROKEE PRINTS  
LAB COAT CK421, COLOR WHITE  
BOTTOM CKA184, COLOR NAVY





**CK451/T**  
**WOMEN'S 28"**  
**CONSULTATION COAT**

XXS-5XL (28")  
(T) XS-2XL (30")

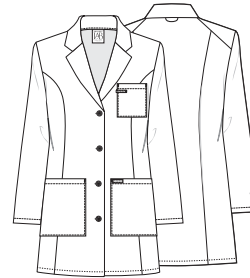
**FABRIC**  
65 Poly / 35 Cotton  
Built-in Stretch Twill

**PRODUCT DETAILS**

- Modern Classic fit
- Three pockets: chest pocket, two front tablet pockets
- Back princess seams

**AVAILABLE COLORS**

WHT



**CK452/T**  
**WOMEN'S 33"**  
**LAB COAT**

XXS-5XL (33")  
(T) XS-2XL (35")

**FABRIC**  
65 Poly / 35 Cotton  
Built-in Stretch Twill

**PRODUCT DETAILS**

- Modern Classic fit
- Three pockets: chest pocket with instrument loop, two front tablet pockets
- Front and back princess seams
- Back shoulder yokes
- Locker loop

**AVAILABLE COLORS**

WHT



**CK421**  
**WOMEN'S 37"**  
**LAB COAT**

XXS-5XL (37")

**FABRIC**  
65 Poly / 35 Cotton  
Built-in Stretch Twill

**PRODUCT DETAILS**

- Modern Classic fit
- Three pockets: chest pocket, two front tablet pockets
- Side access slits
- Front and back yokes
- Bungee ID badge loop
- Back princess seams
- Locker loop
- Binding on sleeve and bottom rounded hem

**AVAILABLE COLORS**

WHT



**CK460/T**  
**UNISEX 38"**  
**LAB COAT**

XXS-5XL (38")  
(T) S-3XL (40")

**FABRIC**  
65 Poly / 35 Cotton  
Built-in Stretch Twill

**PRODUCT DETAILS**

- Unisex fit
- Three pockets: chest pocket, two front tablet pockets
- Side access slits
- Bungee ID badge loop

**AVAILABLE COLORS**

WHT

MEN'S STYLES

KID'S STYLES



**CK401/T**  
**MEN'S 30"**  
**CONSULTATION COAT**

XXS-5XL (30")  
(T) XS-2XL (32")

**FABRIC**  
65 Poly / 35 Cotton  
Built-in Stretch Twill

**PRODUCT DETAILS**

- Men's Modern fit
- Three pockets: chest pocket, two front tablet pockets
- Back yoke and center back seam

**AVAILABLE COLORS**

WHT



**CK412/T**  
**MEN'S 38"**  
**LAB COAT**

XXS-5XL (38")  
(T) XS-2XL (40")

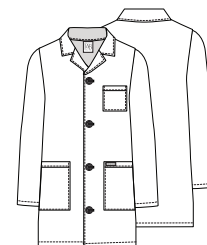
**FABRIC**  
65 Poly / 35 Cotton  
Built-in Stretch Twill

**PRODUCT DETAILS**

- Men's Modern fit
- Three pockets: chest pocket, two front tablet pockets
- Side access slits
- Bungee ID badge loop
- Locker loop
- Back yoke
- Back kick pleat

**AVAILABLE COLORS**

WHT



**CK430**  
**KIDS' LAB COAT**

S-L (26")

**FABRIC**  
65 Poly/35 Cotton  
Built-in Stretch Twill

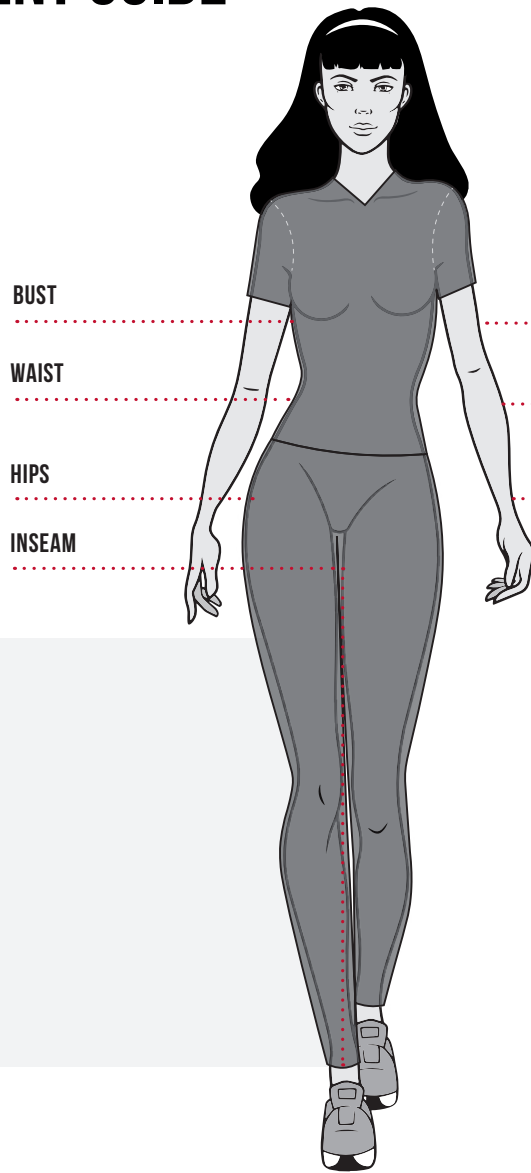
**PRODUCT DETAILS**

- Unisex fit
- Three pockets: chest pocket, two front pockets

**AVAILABLE COLORS**

WHT

# MEASUREMENT GUIDE



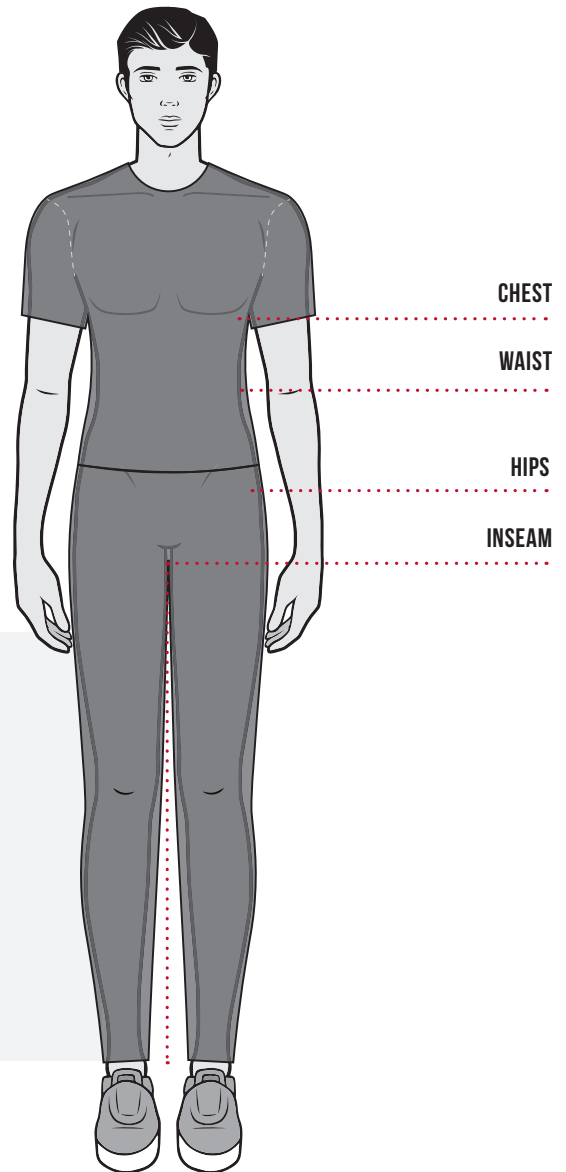
## INSTRUCTIONS

Measure under the arms, around the fullest part of the bust/chest.

Measure under the natural waistline, loosely holding the tape measure.

Standing with feet together, measure around the fullest part of the hips.

Measure along the inside of the leg, from just below the crotch to 1" below the ankle.

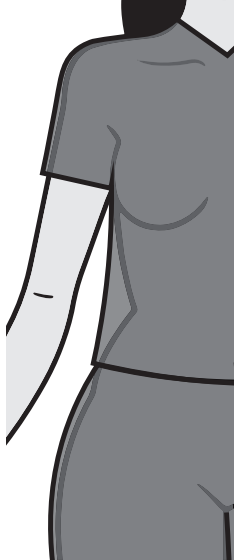


# FIT GUIDES

## WOMEN'S TOP

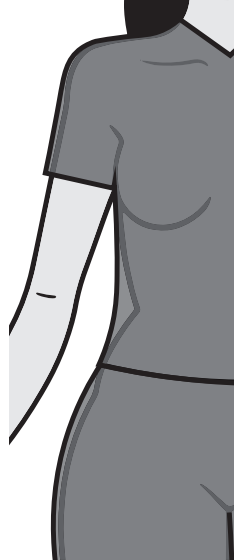
### TRADITIONAL CLASSIC

Cut for maximum comfort



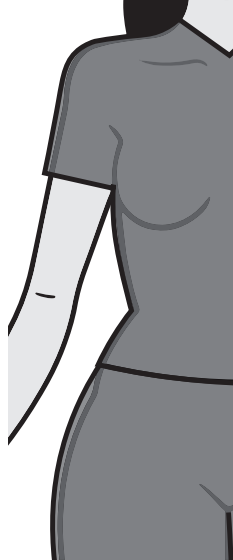
### MODERN CLASSIC

Contours the body with ease



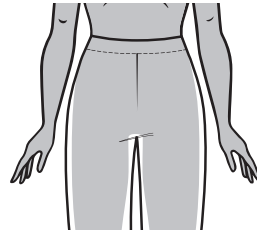
### CONTEMPORARY

Contoured to your curves

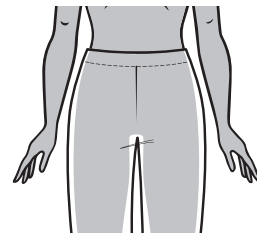


## WOMEN'S WAIST

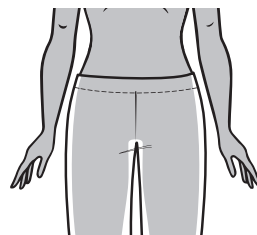
### NATURAL RISE



### MID RISE



### LOW RISE

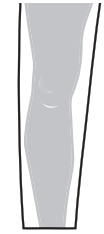


## WOMEN'S LEG

### JOGGER



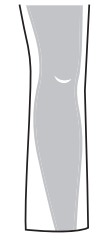
### STRAIGHT



### TAPERED



### MODERATE FLARE BOOT CUT



### FLARE



## MEN'S TOP

### CLASSIC

Relaxed fit for ultimate comfort



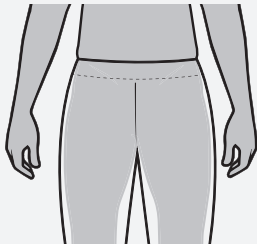
### ATHLETIC

Tapered cut for a sleek silhouette



## MEN'S WAIST

### NATURAL RISE



## MEN'S LEG

### CLASSIC



### ATHLETIC





# SIZE CHARTS

All measurements are in inches.

## WOMEN'S TRADITIONAL CLASSIC FIT/MATERNITY FIT

	<b>XXS</b> 2	<b>XS</b> 4-6	<b>S</b> 8-10	<b>M</b> 12-14	<b>L</b> 16-18	<b>XL</b> 20-22	<b>2XL</b> 24-26	<b>3XL</b> 28-30	<b>4XL</b> 32-34	<b>5XL</b> 34-38
<b>Bust</b>	34-35	36-37	38-39	40-42	43-45	46-48	49-52	53-56	57-60	61-64
<b>Waist</b>	25-26	27-28	29-30	31-33	34-36	37-39	40-43	44-47	48-51	52-55
<b>Hips</b>	34-35	36-37	38-39	40-42	43-45	46-48	49-52	53-56	57-60	61-64

Inseam: Regular 30-31", Petite 27½-28½", Tall 33-34"

## WOMEN'S MODERN CLASSIC FIT

	<b>XXS</b> 0	<b>XS</b> 2-4	<b>S</b> 6-8	<b>M</b> 10-12	<b>L</b> 14-16	<b>XL</b> 18-20	<b>2XL</b> 22-24	<b>3XL</b> 26-28	<b>4XL</b> 30-32	<b>5XL</b> 34-36
<b>Bust</b>	33-34	35-36	37-38	39-41	42-44	45-47	48-51	52-55	56-59	60-63
<b>Waist</b>	25-26	27-28	29-30	31-33	34-36	37-39	40-43	44-47	48-51	52-55
<b>Hips</b>	34-35	36-37	38-39	40-42	43-45	46-48	49-52	53-56	57-60	61-64

Inseam: Regular 30-31", Petite 27½-28½", Tall 33-34"

## WOMEN'S CONTEMPORARY FIT

	<b>XXS</b> 0	<b>XS</b> 2-4	<b>S</b> 6-8	<b>M</b> 10-12	<b>L</b> 14-16	<b>XL</b> 18-20	<b>2XL</b> 22-24	<b>3XL</b> 26-28	<b>4XL</b> 30-32	<b>5XL</b> 34-36
<b>Bust</b>	32-33	34-35	36-37	38-40	41-43	44-46	47-50	51-54	55-58	59-60
<b>Waist</b>	25-26	27-28	29-30	30-32	34-36	37-39	40-43	44-47	48-51	52-55
<b>Hips</b>	33-34	35-36	37-38	39-40	42-44	45-47	48-51	52-55	56-59	61-64

Inseam: Regular 30-31", Petite 27½-28½", Tall 33-34"

## MEN'S TRADITIONAL FIT

	<b>XS</b> 2-4	<b>S</b> 6-8	<b>M</b> 10-12	<b>L</b> 14-16	<b>XL</b> 18-20	<b>2XL</b> 22-24	<b>3XL</b> 26-28	<b>4XL</b> 30-32	<b>5XL</b> 34-36
<b>Chest</b>	35-37	38-40	41-43	44-47	48-51	52-55	56-59	60-63	64-67
<b>Waist</b>	28-30	31-33	34-36	33-36	41-44	45-48	49-52	53-56	57-60
<b>Hips</b>	34-36	37-39	40-42	43-46	47-50	51-54	55-58	59-62	63-66

Inseam: Regular 31-32", Short 29-30", Tall 34-35", Ultra Tall (unhemmed) 36"

## MEN'S MODERN FIT

	<b>XS</b> 2-4	<b>S</b> 6-8	<b>M</b> 10-12	<b>L</b> 14-16	<b>XL</b> 18-20	<b>2XL</b> 22-24	<b>3XL</b> 26-28	<b>4XL</b> 30-32	<b>5XL</b> 34-36
<b>Chest</b>	33-35	36-38	39-41	42-45	46-49	50-53	54-57	58-61	62-65
<b>Waist</b>	26-28	29-31	32-34	35-38	39-41	42-45	46-49	50-53	54-57
<b>Hips</b>	32-34	35-37	38-40	41-44	45-48	49-52	53-56	57-60	61-64

Inseam: Regular 31-32", Short 29-30", Tall 34-35", Ultra Tall (unhemmed) 36"

## UNISEX TRADITIONAL FIT

	<b>XXS</b> 0	<b>XS</b> 2-4	<b>S</b> 6-8	<b>M</b> 10-12	<b>L</b> 14-16	<b>XL</b> 18-20	<b>2XL</b> 22-24	<b>3XL</b> 26-28	<b>4XL</b> 30-32	<b>5XL</b> 34-36
<b>Chest</b>	32-34	35-37	38-40	41-43	44-47	48-51	52-55	56-59	60-63	64-67
<b>Waist</b>	25-27	28-30	31-33	34-36	37-40	41-44	45-48	49-52	53-56	57-60
<b>Hips</b>	32-34	35-37	38-40	41-43	44-47	48-51	52-55	56-59	60-63	64-67

Inseam: Regular 31-32", Short 29-30", Tall 34-35", Ultra Tall (unhemmed) 36"

## UNISEX MODERN FIT

	<b>XXS</b> 0	<b>XS</b> 2-4	<b>S</b> 6-8	<b>M</b> 10-12	<b>L</b> 14-16	<b>XL</b> 18-20	<b>2XL</b> 22-24	<b>3XL</b> 26-28	<b>4XL</b> 30-32	<b>5XL</b> 34-36
<b>Chest</b>	30-32	33-35	36-38	39-41	42-45	46-49	50-53	54-57	58-61	62-65
<b>Waist</b>	23-25	26-28	29-31	32-34	35-38	39-41	42-45	46-49	50-53	54-57
<b>Hips</b>	30-32	33-35	36-38	39-41	42-45	46-49	50-53	54-57	58-61	62-65

Inseam: Regular 31-32", Short 29-30", Tall 34-35", Ultra Tall (unhemmed) 36"

Use this chart to determine your size. If one of your measurements is between two sizes, order the smaller size for a tighter fit or the larger size for a looser fit. If your measurements for hips and waist correspond to two different suggested sizes, order the one indicated by your hip measurement.

# STYLE INDEX

STYLE #	PAGE(S)	STYLE #	PAGE(S)	STYLE #	PAGE(S)
759	55	CK252A/S/T	19	CK749A	18
4043	35	CK301	56	CK752A	19
4243	35	CK303	43	CK792	49
4300	30	CK321	50, 56	CK793	51
4315	34	CK329A	13	CK794	50
4350	29	CK349A	18	CK819	46
4700	29	CK356A	12	CK824A	19
4725	35	CK390	46	CK840	46
4727	34	CK394A	19	CK843	46
4728	34	CK399	47	CK836A	12
4743	35	CK401/T	65	CK837A	12
4777	30	CK412/T	65	CK885	47
4876	30	CK421	65	CKA167/P	41
4881	29	CK430	65	CKA169/P	41
24001/P/T	35	CK451/T	65	CKA184/P/T	39
4000/S/T	30	CK452/T	65	CKA186/S/T	39
4005/P/T	34	CK460/T	65	CKA189/S/T	39
4044/P/T	34	CK513	50, 52, 56	CKA190/P/T	39
4100/S/T	30	CK514	51, 55	CKA319	41
4101/P/T	29	CK605	43	CKA384	38
4200/P/T	29	CK616	56	CKA387	39
6625C	60	CK637	49, 51, 52, 55, 57	CKA570	38
6875C	60, 61	CK652	49, 51, 55	CKA667	41
CK002/P/T	43	CK662	50, 57	CKA669	41
CK011/P	43	CK664	49, 53, 54	CKA672	38
CK092/P/T	46	CK671	50, 51, 52, 53, 55, 57	CKA684	38
CK095/P/T	46	CK678	49, 50, 52, 54	CKA685	38
CK131A/S/T	13	CK688	49, 54	CKA686	39
CK132A/S	13	CK691	52	CKA688	38
CK136A/P/T	12	CK692	57	CKA689	39
CK138A/P	12	CK703	51, 52, 53, 54, 56	CKA690	38
CK185	47	CK718A	13	TF320	58
CK224A/S/T	19	CK719A	13	TF513	61, 62, 63
CK248A/P/T	18	CK748A	18	TF514	60
CK249A/P/T	18			TF614	59

# STYLE INDEX

STYLE #	PAGE(S)	STYLE #	PAGE(S)
TF626	62	WW350AB	27
TF632	62	WW360	32
TF641	59	WW400AB	27
TF659	61	WW410AB	27
TF671	63	WW420AB	27
TF686	59	WW450AB	27
TF687	62	WW530C	30
TF688	61	WW601	22
TF736	58	WW603	24
TF737	59, 61	WW610	22
TF738	61, 62, 63	WW612P	22
TF740	58	WW615	24
TF756	59	WW620	23
TF761	60	WW625	26
TF769	59	WW630	34
TF772	60	WW645	29
TF776	61, 62	WW657	23
TF780	60	WW665	32
TF783	58	WW670	25
TF786	63	WW688	26
TF787	58, 63	WW690	25
WW011/P/T	23	WW695/T	32
WW012/S/T	25	WW698	22
WW020/S/T	26	WW700	32
WW105/P/T	23	WW751	24
WW110/P/T	23		
WW115/P/T	23		
WW120/P/T	24		
WW140/S/T	25		
WW155/P/T	26		
WW170/P/T	32		
WW190/S/T	32		
WW251/S/T	24		
WW2875	22		
WW310	22		
WW320	25		
WW340	32		



# PRINT INDEX

ABBREV.	PRINT	PAGE(S)	ABBREV.	PRINT	PAGE(S)
<b>ALPA</b>	<b>Paper Alice</b>	<b>59</b>	MKMK	Mickey	61
ARBM	Artful Blooms	54	<b>MKPM</b>	<b>Mix And Match</b>	<b>58</b>
<b>BAFO</b>	<b>Fawned Of Butterflies</b>	<b>60</b>	<b>MKRG</b>	<b>Garden Stroll</b>	<b>59</b>
<b>BBSV</b>	<b>Baby-Saur Love</b>	<b>49</b>	MKVE	Minnie Love	58
<b>BGCR</b>	<b>Berry Good Care</b>	<b>49</b>	<b>MLWV</b>	<b>Mineral Waves</b>	<b>52</b>
BIBT	Brilliant Botanicals	54	<b>MNFV</b>	<b>Love Flowers</b>	<b>58</b>
<b>BMUG</b>	<b>Blooming Bugs</b>	<b>49</b>	<b>MRLP</b>	<b>Marker Leopard</b>	<b>52</b>
<b>BOTB</b>	<b>Botanics In Bloom</b>	<b>49</b>	MWCM	Meowy Christmouse	56
CFDA	Confetti Daisies	54	NMSP	Need My Space	57
<b>CFTC</b>	<b>Care For The Cause</b>	<b>49</b>	OGGT	Give Thanks	54
<b>CLCT</b>	<b>Calming Critters</b>	<b>49</b>	<b>OGHC</b>	<b>Happier Camper</b>	<b>61</b>
<b>CLMA</b>	<b>Calma Llama</b>	<b>50</b>	<b>OWTN</b>	<b>Owl Together Now</b>	<b>52</b>
<b>DCSM</b>	<b>Sweet McStuffins</b>	<b>60</b>	<b>PDPO</b>	<b>Painted Pop</b>	<b>52</b>
<b>DIAW</b>	<b>Different Is Au-Some</b>	<b>50</b>	<b>PHFE</b>	<b>Bother Free</b>	<b>59</b>
<b>DPKT</b>	<b>Breakin' Thru</b>	<b>61</b>	<b>PNVT</b>	<b>Love Stinks</b>	<b>62</b>
<b>DTLF</b>	<b>Dental Life</b>	<b>50</b>	<b>PNWW</b>	<b>Woodstock Spirit</b>	<b>62</b>
<b>DUFH</b>	<b>High Flying Circus</b>	<b>58</b>	<b>PRGM</b>	<b>Carriage Ride</b>	<b>59</b>
<b>FIFY</b>	<b>Feline Friendly</b>	<b>50</b>	<b>PTHP</b>	<b>Happy Place</b>	<b>62</b>
<b>FLFB</b>	<b>Floral Flashback</b>	<b>51</b>	<b>PWRY</b>	<b>Pool Paw-rtly</b>	<b>53</b>
<b>GRRB</b>	<b>Garden Rainbow</b>	<b>51</b>	<b>PYPN</b>	<b>Paisley Punch</b>	<b>52</b>
HAQA	Happy As A Quokka	55	<b>PYTP</b>	<b>Python Perfection</b>	<b>53</b>
HETA	Herd That	55	<b>SDVU</b>	<b>Ruv Is In The Air</b>	<b>61</b>
<b>HKMS</b>	<b>Yummy Sweets</b>	<b>63</b>	<b>SEGM</b>	<b>Magical Cat</b>	<b>61</b>
HRTB	Heartbeat	55	<b>SHGO</b>	<b>Sweetheart Geo</b>	<b>53</b>
HTHP	Hoppy To Help	55	SOBK	Snow Bunny Like U	57
<b>IECT</b>	<b>Coffee Time</b>	<b>62</b>	SUSO	Spooktacular Sloths	57
<b>KLCR</b>	<b>Koala's Care</b>	<b>51</b>	<b>SWCL</b>	<b>Oscar's Treasures</b>	<b>63</b>
<b>KPHK</b>	<b>Happy Keroppi</b>	<b>63</b>	<b>SWFG</b>	<b>Finger Paint</b>	<b>63</b>
<b>LBPT</b>	<b>Lab Purr-tners</b>	<b>51</b>	<b>TBWM</b>	<b>World of Magic</b>	<b>60</b>
<b>LGPT</b>	<b>Loving Petals</b>	<b>51</b>	<b>UPAD</b>	<b>Adventure</b>	<b>61</b>
<b>LHAF</b>	<b>Angelic Feeling</b>	<b>59</b>	<b>VIDF</b>	<b>Dragon Flower</b>	<b>59</b>
<b>LTET</b>	<b>Electric Tweety</b>	<b>62</b>	WDAB	Wild Abstract	57
LVSS	Loving Stars	56	<b>YRTZ</b>	<b>You're The Zest!</b>	<b>53</b>
MKBM	Big Minnie	60			

# COLOR ABBREVIATIONS

COLOR NAME	COLOR	ABBREV. (S)
Black		BLK, BLKW, BAPS
Bright Violet		BVLT
Bright Violet/ Tonal Stripe		BVWT
Caribbean (Blue)		CAR, CARW, CAPS
Carmine Pink		CPPS
Cayenne		CYNE
Chocolate		CHCW
Ciel (Blue)		CIE, CIEW, CIPS
Cucumber		CUCM
Cyan Blue		CYAN
Eggplant		EGG, EGGW
Electric Pink		EEPI
Espresso		ESP
Galaxy Blue		GAB, GABW
Grape		GRP, GRPW
Grey		GRY, GRYW
Heather Pewter		HTPT
Hunter (Green)		HUN, HUNW, HNPS
Iron		IRON
Khaki		KAK, KAKW
<b>Lavender Haze</b>		<b>LVHA</b>
Lime Green		LMGW
Mauve Orchid		MVOR
Neon Pink		NEPI
Navy		NAV, NAVW, NYPS
Navy/Black		NAVBLK
Olive		OLV, OLVW, OLPS

COLOR NAME	COLOR	ABBREV. (S)
Olive Branch		OLBA
Orchid		ORCW
Peach Linen		PLIE
Pewter		PWT, PWTW, PWPS
Pewter/Black		PWBK
Pewter/Royal		PWTROY
Purple Freesia		PUFR
Red		RED, REDW
Riverbend		RVBD
Rooftop Red		FIHY
Royal		ROY, ROYW, RYPS
Sage Green		SAGW
<b>Sage Heather</b>		<b>SGHA</b>
Shocking Pink		SHPW
Soft Sea		SOSX
Soft Pomegranate		SOFP
Sparkling Jade		SPJD
Spring Iris		SPIS
<b>Sugar Melon</b>		<b>SUCL</b>
Surgical Green		SGRW
<b>Sweet Cantaloupe</b>		<b>STCP</b>
Teal Blue		TLB, TLBW, TLPS
Turquoise		TRQ, TRQW
<b>Vibrant Violet</b>		<b>FBVI</b>
White		WHT, WHTW, WTPS
Wine		WIN, WINW, WNPS

**NEW COLORS IN BOLD**



## CERTAINTY® FABRIC TECHNOLOGIES

Integrated into many Cherokee products, they add one or more extra levels of protection to scrubs, lab coats, shoes, and accessories that last for the expected life of the product, with appropriate care. Look for the Certainty logo and corresponding letter designation(s) – A for antimicrobial, B for fluid barrier – to find products with our proprietary Certainty fabric technologies.

### Certainty antimicrobial fabric technology

Inhibits bacteria that cause odors, fabric decay, and discoloration.

### Certainty fluid barrier technology

Helps repel unwanted fluids, helping protect against spills and stains.

Wash all garments thoroughly after each use. Garments and footwear featuring Certainty antimicrobial technology do not protect users or others against bacteria, viruses, or disease organisms. Garments and footwear with fluid barrier technology are not waterproof, nor should they be used as personal protective equipment. Always follow all best practices for infection prevention.



Activated when odor-causing bacteria come in contact with the fabric.



Most oils and fluids bead up and roll off, or can be removed with a damp cloth.

## ORDERING INFORMATION

### ONLINE

cbicentral.com

### CUSTOMER CARE

1119 Colorado Ave., Santa Monica, CA 90401  
Customer Care: 800.283.7272  
M – F, 6am to 4pm PST  
Fax: 888.283.7271  
Email: [orderinginquiry@careismatic.com](mailto:orderinginquiry@careismatic.com)  
Order on CBI Central: [cbicentral.com](http://cbicentral.com)

---

## RETURN POLICY

Careismatic Brands (formerly Strategic Partners, Inc.) is fully committed to providing quality products and service. Products with quality issues may be returned within one year of the invoice date. The following guidelines will help expedite the process and will ensure that the proper credit is applied to your account.

### Return Policy Guidelines:

- A Return Authorization (RA) Number is required for returned merchandise.
- Contact Customer Care at 800.283.7272 for an RA Number, which will be issued by email or fax.
- Be prepared to provide the corresponding invoice number for the merchandise being returned.
- We will not accept or give credit for returns of unauthorized merchandise.
- We reserve the right to deny credit for damaged garments due to misuse, abuse, alteration or excessive wear.

### Transshipping:

- Transshipping (shipping, drop-shipping or forwarding merchandise for resale to any location) requires written consent.

---

## CHEROKEE, TOONIFORMS (SPRING 2024)

Disney elements © Disney; Disney •  
Pixar elements © Disney/Pixar

Sesame Street® and associated characters,  
trademarks and design elements are owned and  
licensed by Sesame Workshop. © 2024 Sesame  
Workshop. All Rights Reserved.

SCOOBY-DOO and all related characters and  
elements © & ™ Hanna-Barbera (s24)

TM & © 2024 Dr. Seuss Enterprises, L.P.

© Universal City LLC. All Rights Reserved.

© 2024 Peanuts Worldwide LLC

© 2024 SANRIO CO., LTD. Used Under License.

© 2024 Careismatic Brands. All Rights Reserved.  
Rudolph then Red-Nosed Reindeer © and ®/TM  
The Rudolph Co., L.P. All elements under license to  
Character Arts LLC. All rights reserved.

FRIENDS and all related characters and elements © & ™  
Warner Bros. Entertainment Inc. WB SHIELD: © & ™  
WBEI. (s24)







S P R I N G  
2 0 2 4



**CHEROKEE**  
— MEDICAL —  
**UNIFORMS**

Scan to view online



**BUY LOCAL**

Uniform retailers have  
everything in store for you.

[CherokeeUniforms.com](http://CherokeeUniforms.com)



[@cherokeeuniforms](https://www.facebook.com/cherokeeuniforms)

8040/JAN24