



INFINITY®

SPRING EDITION 2024

8554/JAN24

GO THE DISTANCE



TABLE OF CONTENTS



IN350A + IN702A
Shown in Royal



Brand Story 04

GNR8 Line 06

Legacy Styles 24

Prints 32

Footwear 34

Legwear 39

Size Chart 40



IN641 + IN122A
Shown in Green Energy

INFINITY, RECHARGED

Get in line with Infinity's new look, fresh feel, and high-energy vibes. Its innovative pieces are designed for medical and healthcare professionals who prefer a sportier style with plenty of substance. Super-flattering fits and athletic footwear and legwear feature comfort-tech details made for movement, with top-shelf performance wear that covers more than just scrubs and stretches beyond just the workday. Powered by the limitless potential in all of us, Infinity's self-motivated mindset conveys a can't-stop confidence that keeps its focus far past the finish line.



IN622A + IN122A
Shown in Royal



EPIC. ELECTRIC. ENERGETIC. THE NEW GNR8 LINE

An impeccably crafted collection for game-changers and goal-crushers, Infinity's all-new GNR8 line is cut from a different kind of cloth; a performance-ready poly blend infused with copper*, an inert fiber, to enhance feel and push comfort to the max. Busy days are no sweat with odor-fighting fabric technology powered by PROTX2[®]. This co-ed lineup stands strong in its own lane, with in-demand details and vivid orange color pops from top to toe. Smart-tech features for a watch, phone, and work tools are designed to create seamless synchronicity between scrub style and lifestyle.

NEW

LOGO PERFORMANCE UNDERSCRUB STYLE IN641

- Contemporary fit
- Round neck
- Infinity logo at center front
- Stylized seams with coverstitching
- Contrast stitching at side seams
- Thumbhole cuffs
- 360° stretch knit
- 88 Poly / 12 Spandex Knit

Fashion:
XS-2XL

Available in GGEN & ECCR only
Shown in Green Energy



THUMBHOLE CUFFS

NEW

MID RISE JOGGER PANT STYLE IN122A/P

- Contemporary fit
- Logo elastic waistband with inside drawstring
- 4 pockets: 2 front, 2 welt zipper cargo
- Rib-knit side panel and cuffs
- Tapered leg, 9½" opening

Core:

A XXS-3XL

AP XXS-2XL

Fashion:

A XS-3XL

AP XS-2XL

Shown in Green Energy



GNR8 FABRIC: SUPER SOFT • STRETCH • EASY CARE • 91 POLY / 9 SPANDEX + PROTX2*

NEW

MEN'S FLY FRONT DRAWSTRING PANT STYLE IN200A/S/T

- Men's fit
- Rib-knit waistband with tipped drawstring
- Zip fly
- 6 pockets: 2 front in-seam with rib-knit inserts, 2 welt cargo, 2 back welt
- Knee darts
- Side vents with signature Infinity tape
- Leg opening 14"

Core:

A XS-3XL

AS S-XL

AT S-XL

Shown in Royal



NEW

MEN'S ZIP-FRONT JACKET STYLE IN350A

- Men's fit
- Rib-knit collar and shaped cuffs
- 3 pockets: 1 side zip chest, 2 in-seam
- Rib-knit back panel

Core:
A XS-3XL

Available in BLK, NAV, PWT & ROY only

Shown in Royal

NEW

MEN'S V-NECK ZIP TOP STYLE IN702A

- Men's fit
- Partial zipper at neckline
- 3 pockets: 1 welt chest, 2 in-seam zipper
- Rib-knit side panels

Core:
A XS-3XL

Shown in Royal



GNR8 FABRIC: SUPER SOFT • STRETCH • EASY CARE • 91 POLY / 9 SPANDEX + PROTX2*

NEW

V-NECK TOP STYLE IN620A

- Contemporary fit
- Rib-knit chest insets
- 1 kangaroo pocket
- Shaped rib-knit side panels
- Rib-knit back panel
- Rounded high-low hem

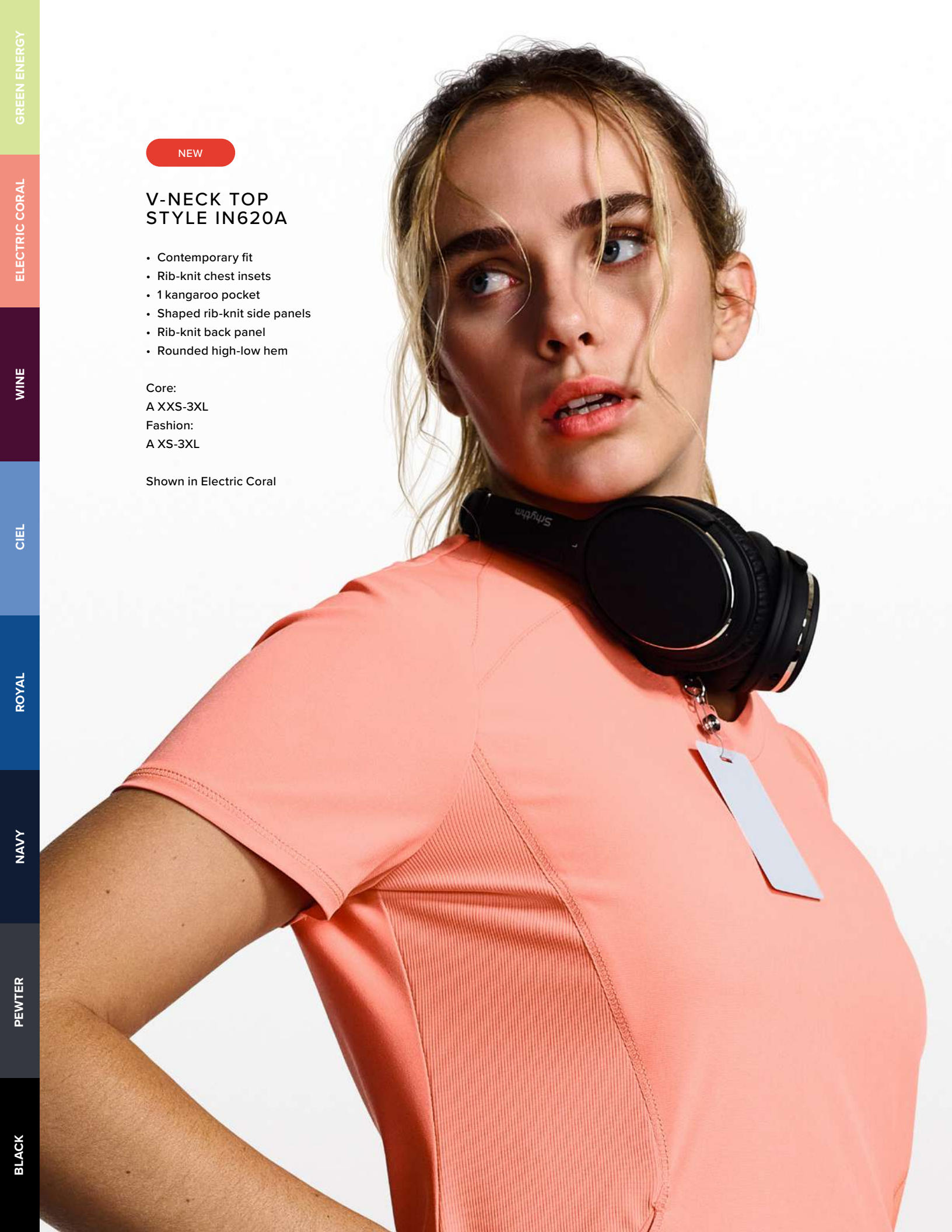
Core:

A XXS-3XL

Fashion:

A XS-3XL

Shown in Electric Coral



GREEN ENERGY

ELECTRIC CORAL

WINE

CIEL

ROYAL

NAVY

PEWTER

BLACK

NEW

MID RISE PULL-ON PANT STYLE IN120A/P/T

- Contemporary fit
- Rib-knit waistband
- 5 pockets: 2 front in-seam, 1 welt cargo, 2 back in-seam zipper
- Zipper side vents with signature contrast mesh gussets
- Tapered leg, 12½" opening

Core:

A XXS-3XL

AP XXS-2XL

AT XS-XL

Fashion:

A XS-3XL

AP XS-2XL

Shown in Electric Coral
INFINITE BBNG



GNR8 FABRIC: SUPER SOFT • STRETCH • EASY CARE • 91 POLY / 9 SPANDEX + PROTX2*

*Prints and underscrubs do not have PROTX2 (odor protection) at this time.



NEW

MEN'S CONVERTIBLE PANT STYLE IN202A

- Men's fit
- Flat front elastic waistband with inside tipped drawstring
- Mock fly
- Rib-knit insets on waistband and hip panels
- 3 pockets: 2 front, 1 back in-seam zipper
- Zip-off pant legs
- Straight leg, 17½" opening

Fashion:
A S-2XL

Available in BLK & NAV only

Shown in Navy
M-INFINITE BLNC



ZIP-OFF KNEE SEAMS

*Prints and underscrubs do not have PROTX2 (odor protection) at this time.

NEW

MEN'S V-NECK TOP STYLE IN700A

- Men's fit
- Rib-knit neckband and yokes
- 1 zip welt chest pocket
- Rib-knit side panels
- Side vents with signature Infinity tape
- High-low hem

Core:
A XS-3XL

Shown in Navy

GNR8 FABRIC: SUPER SOFT • STRETCH • EASY CARE • 91 POLY / 9 SPANDEX + PROTX2*



NEW

ROUND NECK ZIP TOP STYLE IN622A

- Contemporary fit
- Covered placket with hidden zipper
- 3 pockets: 1 in-seam zipper chest, 2 in-seam zipper
- Cap sleeves
- Sporty front and back yoke seams
- Rib-knit side and back panels

Core:

A XXS-3XL

Fashion:

A XS-3XL

Shown in Green Energy

INFINITE BBNC



IN622A
Shown in Green Energy



GNR8 FABRIC: SUPER SOFT • STRETCH • EASY CARE • 91 POLY / 9 SPANDEX + PROTX2*

*Prints and underscrubs do not have PROTX2 (odor protection) at this time.

ROYAL

NAVY

PEWTER

BLACK



NEW

ZIP FRONT JACKET STYLE IN320A

- Contemporary fit
- Funnel collar
- 2 in-seam pockets
- Stylized rib-knit front and back panels
- Shaped rib-knit cuffs
- High-low hem

Core:
A XXS-3XL

Available in BLK, NVY, PWT & ROY only
Shown in Navy

NEW

PERFORMANCE UNDERSCRUB STYLE IN640

- Contemporary fit
- Stylized seams with cover stitching
- Contrast stitching at side seams
- Thumbhole cuffs
- 360° stretch knit
- 88 Poly / 12 Spandex Knit

Core:
XS-2XL

Available in BLK, NAV & PWT only

Shown in Navy
INFINITE BBNC



THUMBHOLE CUFFS

GNR8 FABRIC: SUPER SOFT • STRETCH • EASY CARE • 91 POLY / 9 SPANDEX + PROTX2*

*Prints and underscrubs do not have PROTX2 (odor protection) at this time.

WINE

CIEL

ROYAL

NAVY

PEWTER

BLACK

NEW

MEN'S V-NECK ZIP TOP STYLE IN702A

- Men's fit
- Partial zipper at neckline
- 3 pockets: 1 welt chest, 2 in-seam zipper
- Rib-knit side panels

Core:

A XS-3XL

Shown in Royal



NEW

MEN'S MID RISE JOGGER STYLE IN204A/S

- Logo elastic waistband with inside drawstring
- 4 pockets: 2 front in-seam, 1 zipper cargo, 1 back in-seam
- Mock fly
- Stylized front leg seams with rib-knit cuffs
- Zipper side vents with signature contrast mesh gussets
- Tapered leg, 10" opening

Core:
A XS-3XL
AS S-XL

Shown in Royal
M-EVERON KNIT BCWW

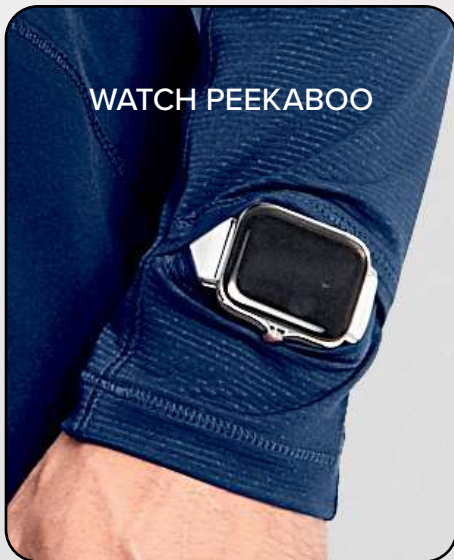
NEW

MEN'S PERFORMANCE UNDERSCRUB STYLE IN608

- Men's fit
- Stylized seams with coverstitching
- Contrast stitching at side seams
- Watch slot on cuffs
- 360° stretch knit
- 88 Poly / 12 Spandex Knit

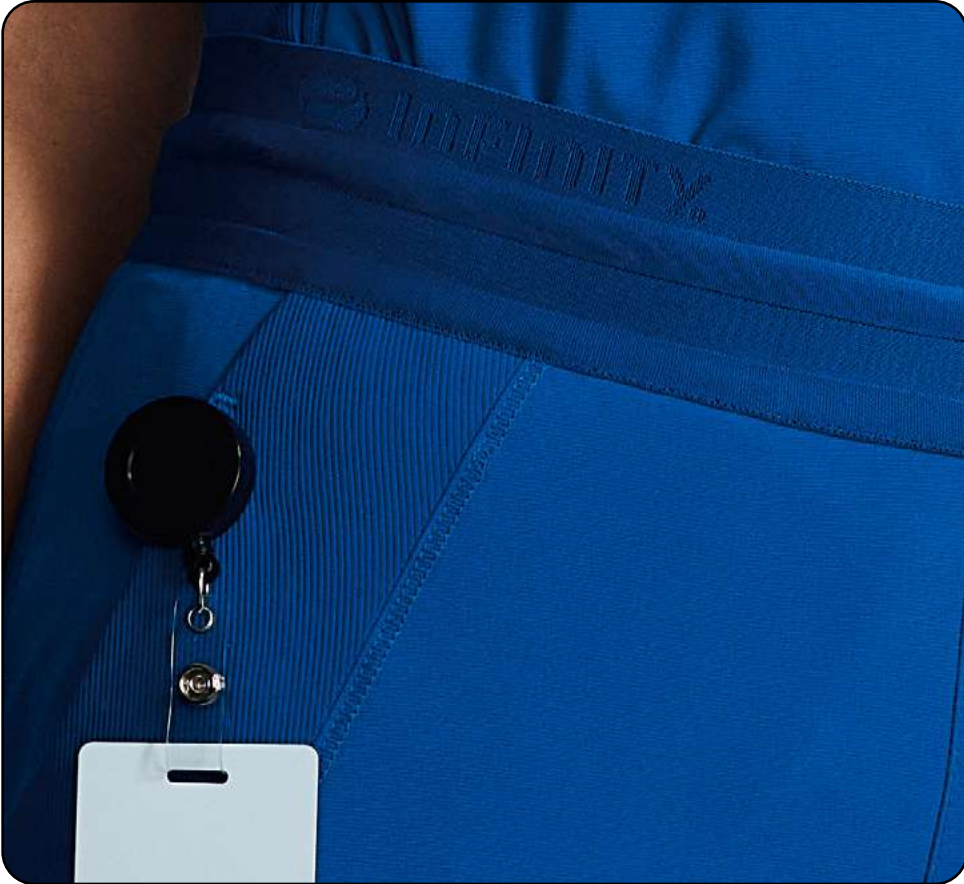
Core:
XS-2XL

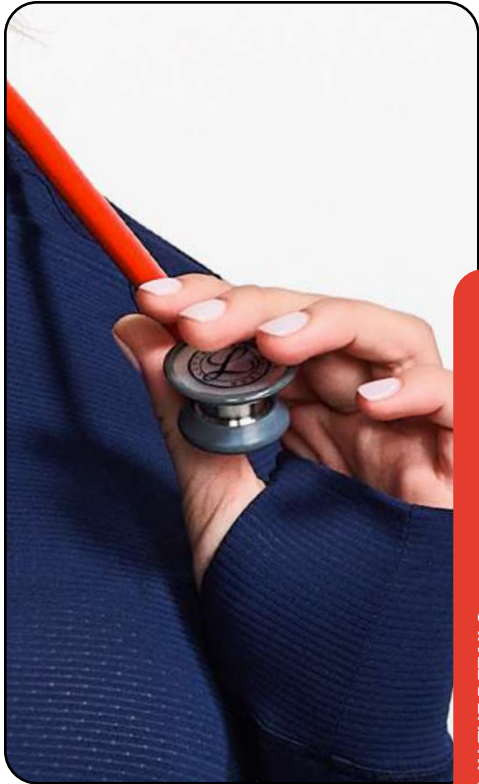
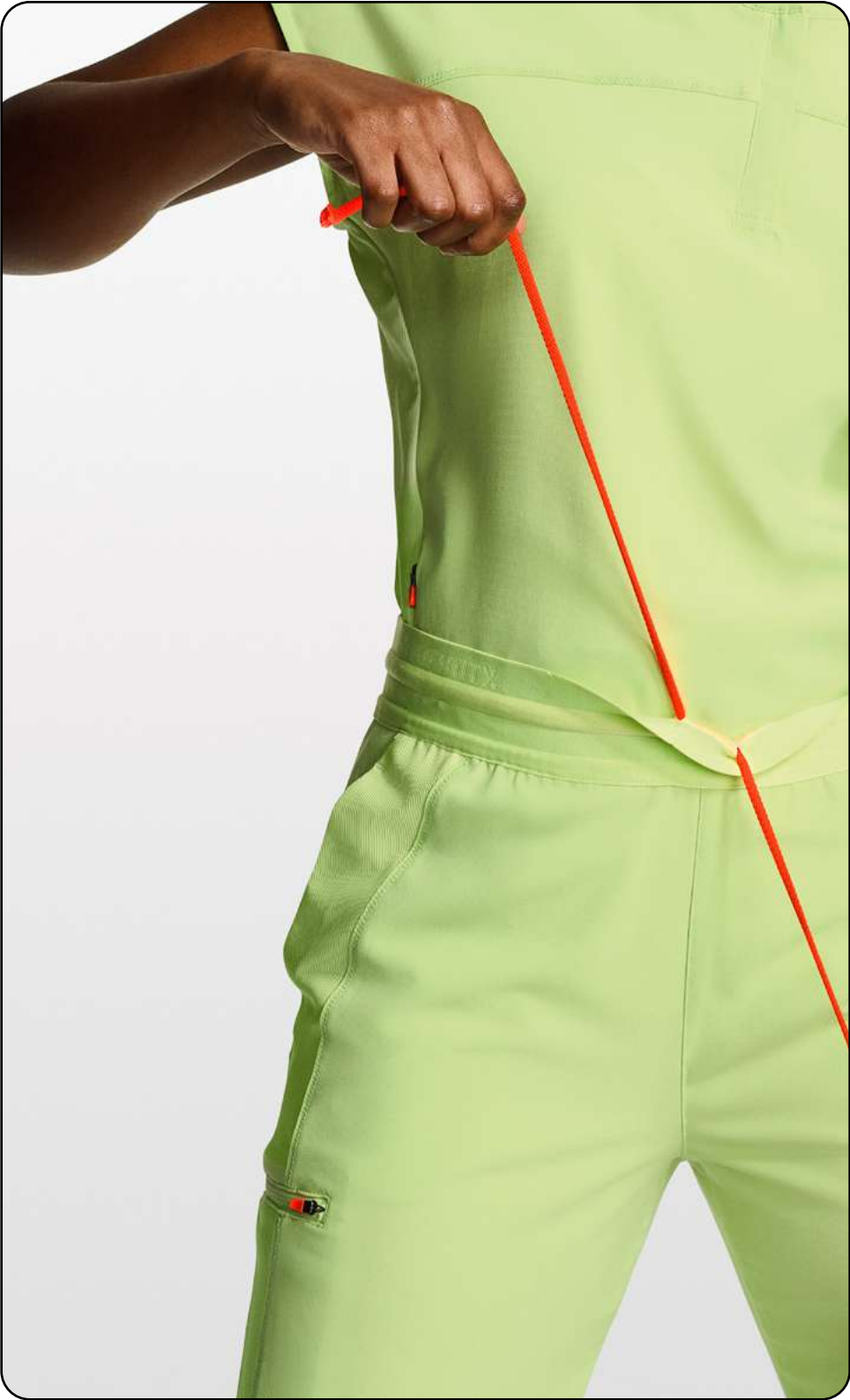
Available in BLK, NAV & PWT only
Shown in Navy



GNR8 FABRIC: SUPER SOFT • STRETCH • EASY CARE • 91 POLY / 9 SPANDEX + PROTX2*

*Prints and underscrubs do not have PROTX2 (odor protection) at this time.





GNR8 LINE: IT'S ALL IN THE DETAILS

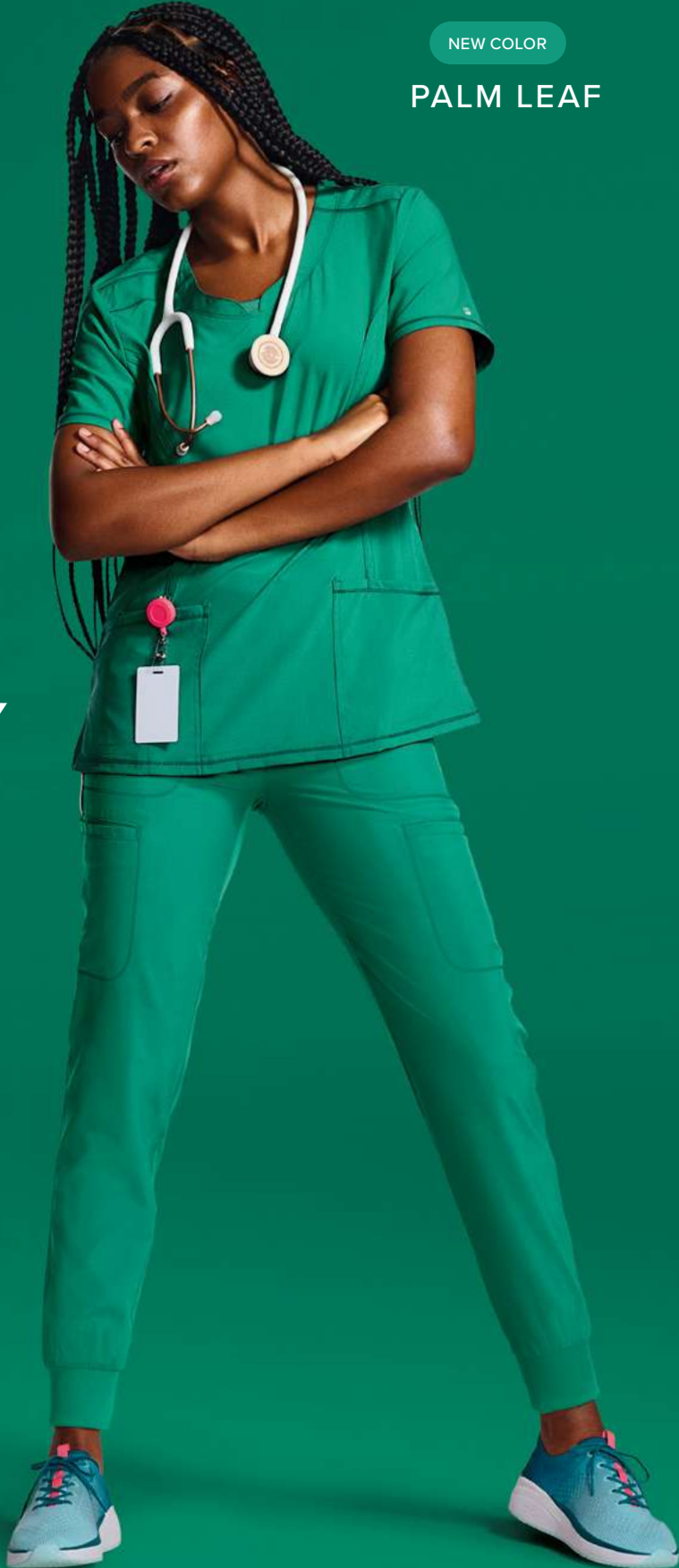
BLACK	NAVY	ROYAL	CIEL
OLIVE	NEW - PALM LEAF	TURQUOISE	KHAKI
WHITE	BRIGHT VIOLET	RED	CARMINE PINK
	GRAPE		
	EGGPLANT		
	WINE		
	HUNTER		
	CARIBBEAN BLUE		
	TEAL BLUE		
	GALAXY BLUE		
	GREY		
	PEWTER		

NEW COLOR

PALM LEAF

LEGACY STYLES

Same great styles, sleek new branding. The pieces preferred by the pros. These elevated essentials reflect what Infinity is known for: Innovative styles that go the extra mile, with superior stretch, can't-beat comfort and athletic-inspired fits that look as good as they feel.



2624A + CK080A
Shown in Palm Leaf

EVERON KNIT OCOM



**2624A
ROUND NECK TOP**

Core:
A XXS-5XL
Fashion:
A XS-3XL

- Contemporary fit
- Three pockets: two patch pockets, interior pocket
- Rib-knit inset at front neckband and back panel
- Shoulder yokes
- Bungee ID badge loop
- Deep side vents



**2625A
MOCK WRAP TOP**

Core:
A XXS-5XL
Fashion:
XS-3XL

- Contemporary fit
- Four pockets: two set-in pockets, interior pocket, utility pocket
- Front and back princess seams
- Rib-knit back panel
- Side vents



**CK623A
V-NECK TOP**

Core:
A XXS-5XL

- Contemporary fit
- Three pockets: two patch pockets with pen slots, interior pocket on the right
- Rib-knit waist inset and back panel
- Bungee ID badge loop
- Shirttail hem
- Side vents



**CK810A
V-NECK TOP**

Core:
A XXS-3XL

- Contemporary fit
- Four pockets: two welt pockets, two in-seam pockets
- Rib-knit inset at neckline
- Rib-knit back panel and cuffs
- Bungee ID badge loop
- Shirttail hem
- Side vents



**CK865A
V-NECK TOP**

Core:
A XXS-5XL

- Contemporary fit
- Two welt pockets, left pocket with pen slot
- Front and back princess seams
- Rib-knit inset at neckline
- Shirttail hem
- Side vents



**CK687A
TUCKABLE
V-NECK TOP**

Core:
A XXS-3XL

- Contemporary fit
- Chest pocket
- Rib-knit inset at neckline
- Front and back shoulder yokes
- Front and back princess seams
- Rib-knit back panel
- Shirttail hem
- Side vents

LEGACY FABRIC: SUPER SOFT • STRETCH • EASY CARE • 95 POLY/5 SPANDEX + PROTX2*

*Prints and underscrubs do not have PROTX2 (odor protection) at this time.

BLACK	PEWTER	GREY	GALAXY BLUE	NAVY	ROYAL	CIEL
OLIVE	HUNTER	CARIBBEAN BLUE	TEAL BLUE	NEW - PALM LEAF	TURQUOISE	KHAKI
WHITE	WINE	EGGPLANT	GRAPE	BRIGHT VIOLET	RED	CARMINE PINK



NEW COLOR

PALM LEAF

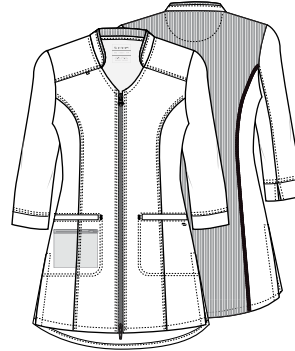
CK742A + CK067A
Shown in Palm Leaf



**CK742A
MOCK NECK
TOP**

Core & Fashion:
A XXS-3XL

- Contemporary fit
- Rib-knit mock neck and center back panel
- Four pockets: welt chest pocket, two lower welt pockets, cellphone pocket
- Dolman sleeves
- Deep side vents
- Curved high-low hem



**CK952A
ZIP FRONT
TUNIC**

Core:
A XXS-3XL

- Contemporary fit
- Three pockets: two welt pockets, interior zipper pocket
- Rib-knit back panel and inset at neckline
- Deep side vents
- Logo zipper pull



**CK782
LONG SLEEVE
UNDERSCRUB
KNIT TEE**

Core:
A XS-2XL

- Contemporary fit
- Round neck
- Knit cuffs
- Shaped back yoke
- Back princess seams
- 95 Poly / 5 Spandex Knit



**CK781A
LONG SLEEVE
ROUND NECK TOP**

Core:
A XXS-5XL

- Contemporary fit
- Three pockets: two patch pockets, cellphone pocket
- Rib-knit inset at neckline
- Shoulder yokes
- Side vents



**CK767
LONG SLEEVE
MOCK NECK
UNDERSCRUB**

Core:
A XS-2XL

- Contemporary fit
- Raglan effect
- Adjustable side-seam length
- Rounded hem
- 89 Poly / 11 Spandex Jersey Knit



**2391A
ZIP FRONT
JACKET**

Core:
A XXS-5XL

- Contemporary fit
- Two hidden zipper pockets
- Front and back shoulder yokes
- Rib-knit collar, cuffs, waistband, and back panel

LEGACY FABRIC: SUPER SOFT • STRETCH • EASY CARE • 95 POLY/5 SPANDEX + PROTX2*

*Prints and underscrubs do not have PROTX2 (odor protection) at this time.

BLACK	PEWTER	GREY	GALAXY BLUE	NAVY	ROYAL	CIEL
OLIVE	HUNTER	CARIBBEAN BLUE	TEAL BLUE	NEW - PALM LEAF	TURQUOISE	KHAKI
WHITE	WINE	EGGPLANT	GRAPE	BRIGHT VIOLET	RED	CARMINE PINK

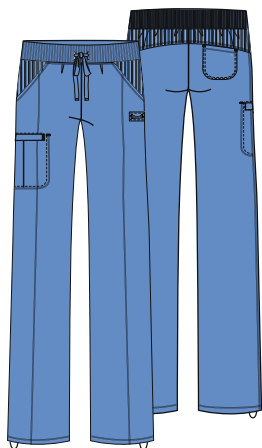


NEW COLOR

PALM LEAF

CK742A + CK067A
Shown in Palm Leaf

EVERON KNIT OCOM



1123A/P/T
DRAWSTRING
PANT

Core:
A XXS-5XL
AP XXS-2XL
AT XS-2XL

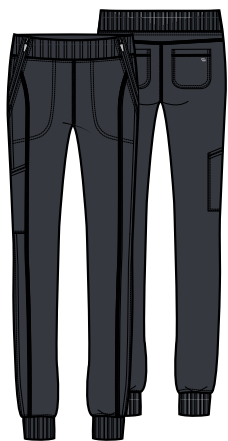
- Contemporary fit
- Lower rise
- Four pockets: two angled front zip pockets, zip cargo pocket, back pocket
- Elastic-reinforced rib-knit waistband with drawstring
- Adjustable toggle hems
- Rib-knit front and back yokes
- Straight leg, 18" opening (18½" for tall)



CK067A/P
HIGH RISE
PANT

Core & Fashion:
A XS-3XL
AP XS-2XL

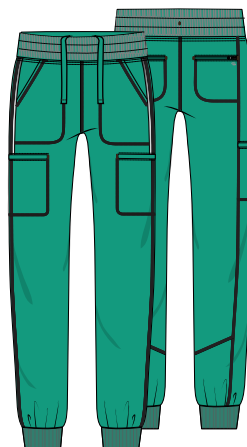
- Contemporary fit
- Wide rib-knit waistband with interior bungee drawcord
- Five pockets: two front pockets, cargo pocket, two snap-closure back pockets
- Partial rib-knit back panels
- Utility bungee loop on left front pocket
- Front leg seams
- Skinny leg, 10" opening



CK110A/P/T
MID RISE
JOGGER

Core:
A XXS-5XL
AP XXS-2XL
AT XS-2XL

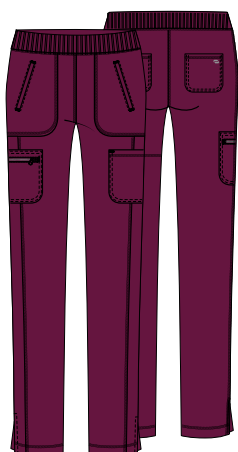
- Contemporary fit
- Elastic-reinforced, rib-knit waistband
- Five pockets: two front angled zip pockets, cargo pocket with reflective tape, two back patch pockets
- Front leg seams
- Rib-knit cuffs
- Tapered leg, 12½" opening



CK080A/P/T
MID RISE
JOGGER

Core:
A XXS-5XL
AP XXS-2XL
AT XS-2XL
Fashion:
A XS-3XL
AP XS-2XL

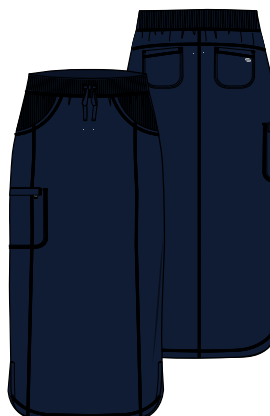
- Contemporary fit
- Elastic-reinforced rib-knit waistband with inside drawstring
- Six pockets: two front pockets, two cargo pockets, two back welt zip pockets
- Stylized back leg seams
- Rib-knit cuffs
- Tapered leg, 9" opening



CK065A/P/T
MID RISE
PULL-ON PANT

Core:
A XXS-5XL
AP XXS-2XL
AT XS-2XL

- Contemporary fit
- Elastic-reinforced rib-knit waistband
- Six pockets: two front welt pockets, two cargo pockets, two back pockets
- Front leg seams
- Side vents
- Tapered leg, 14" opening



CK505A
30" DRAWSTRING
SKIRT

Core:
A XXS-3XL

- Contemporary fit
- Five pockets: set-in pockets, back patch pockets, welt cargo pocket
- Elastic-reinforced rib-knit waistband with drawstring
- Rib-knit front and back yokes
- Coverstitch detail

LEGACY FABRIC: SUPER SOFT • STRETCH • EASY CARE • 95 POLY/5 SPANDEX + PROTX2*

*Prints and underscrubs do not have PROTX2 (odor protection) at this time.

MEN'S LEGACY STYLES



CK900A + CK004A
Shown in Ciel

M-EVERON KNIT NVWW

WHITE

KHAKI

CIEL

RED

ROYAL

EGGPLANT

NAVY

WINE

GALAXY BLUE

TEAL BLUE

GREY

CARIBBEAN BLUE

PEWTER

HUNTER

BLACK

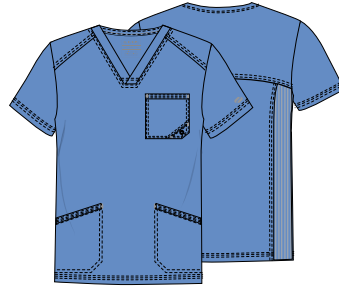
OLIVE



**CK910A
MEN'S TUCKABLE
V-NECK TOP**

Core:
A XS-5XL

- Men's Modern fit
- Two pockets: chest pocket with additional zip pocket
- Rib-knit neckband and back side panels
- Triple-needle topstitching
- Front and back yokes



**CK900A
MEN'S V-NECK
TOP**

Core:
A XS-5XL

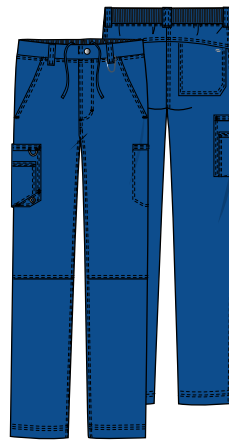
- Men's Modern fit
- Three pockets: chest pocket with grommet detail, two welt pockets
- Rib-knit back side panels
- Front and back yokes



**CK825A
MEN'S POLO
SHIRT**

Core:
A XS-5XL

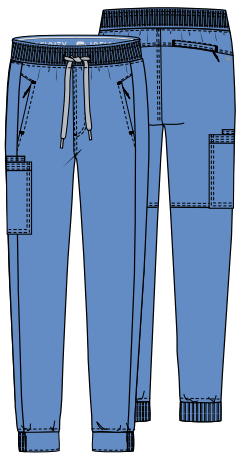
- Men's Modern fit
- Zip chest pocket
- Button placket
- Rib-knit back side panels



**CK200A/S/T
MEN'S FLY FRONT
CARGO PANT**

Core:
A XS-5XL
AS XS-3XL
AT S-2XL

- Men's Modern fit
- Back rib-knit elastic waistband
- Zip fly with button closure and inside drawstring
- Six pockets: two front pockets, welt cargo pocket on left, layered cargo pocket with bungee and grommet on right, back patch pocket
- Knee seams
- Five belt loops
- Tapered leg, 18" opening



**CK004A/S/T
MEN'S MID RISE
JOGGER**

Core:
A XS-5XL
AS XS-3XL
AT S-2XL

- Men's Modern fit
- Rib-knit covered waistband with drawstring
- Mock fly front closure
- Five pockets: two zip front pockets, cargo pocket with cellphone pocket, hidden zip back pocket
- Rib-knit on back of cuffs at leg opening
- Tapered leg, 10½" opening

LEGACY FABRIC: SUPER SOFT • STRETCH • EASY CARE • 95 POLY/5 SPANDEX + PROTX2*

*Prints and underscrubs do not have PROTX2 (odor protection) at this time.

NEW

PRINTS



FLUTTER FRENZY
FTFZ
CK608

Contrast: Navy

Sizes:
XS-5XL

Coordinating Colors:



PAINTED PRISM
PDPM
CK609

Contrast: Turquoise

Sizes:
XXS-5XL

Coordinating Colors:



TROPIC TEXTURE
TCTU
CK609

Contrast: Hunter

Sizes:
XXS-5XL

Coordinating Colors:

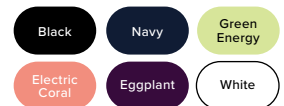


BOLD BOTANICS
BDBT
CK634

Contrast: Black

Sizes:
XXS-5XL

Coordinating Colors:



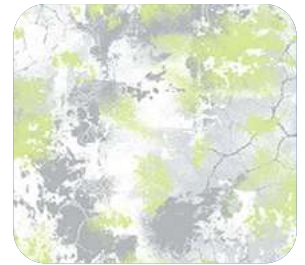


ELECTRIC LOVE
ETLV
CK634

Contrast: Pewter

Sizes:
XS-5XL

Coordinating Colors:

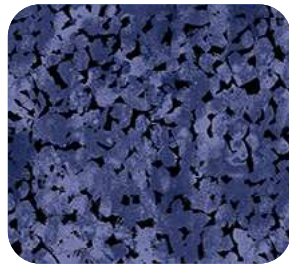


TEXTURE POP
TTPP
CK634

Contrast: Grey

Sizes:
XS-3XL

Coordinating Colors:



MEN'S DISTRESSED GEO
DISG
CK920

Contrast: Navy

Sizes:
XS-5XL

Coordinating Colors:



PRINT FABRIC: 52 RECYCLED POLY / 40 POLY / 8 SPANDEX POPLIN



WOMEN'S FOOTWEAR

Infinity footwear is engineered to go the distance and then some: in life, work, and whatever moves you. Infinity's next-level look and first-rate feel keep you standing strong, all day long.

From comfort-tech construction to fashion-forward styling, every part of Infinity has a purpose.

IN122A
Shown in Green Energy
INFINITE BBNC

NEW STYLE

DISTANCE

A new running-inspired style designed to go the distance, and beyond. Light, breathable mesh with AERON™ midsole technology provides exceptional cushioning and smart-sporty looks.

Heel height: 1¾" Sizes: 6-10, 11

- Feather-light AERON™ EVA midsole for exceptional cushioning
- Breathable and lightweight mesh upper
- Odor-fighting fabric technology in the insole and interior lining
- Removable shock-absorbing latex-free polyurethane insole with arch support and heel cupping
- Oil- and slip-resistant rubber outsole
- Easy to hand-wash with mild soap and water (towel- or air-dry)



BLACK/REFLECTIVE
BRLF



LIGHT GREY/REFLECTIVE
LGGR



WHITE/REFLECTIVE
WHRL

NEW COLORS

INFINITE

The all-new Infinite is engineered for superior comfort and cushioning, with a thicker midsole and heel pad, plus a lightweight mesh upper.

Heel height: 1¾" Sizes: 6-10, 11

- Feather-light AERON™ EVA midsole for exceptional cushioning
- Breathable and lightweight mesh upper
- Odor-fighting fabric technology in the insole and interior lining
- Removable shock-absorbing latex-free polyurethane insole with arch support and heel cupping
- Oil- and slip-resistant rubber outsole
- Easy to hand-wash with mild soap and water (towel- or air-dry)



BLACK/NEON CORAL
BBNC



LIGHT GREY/NEON ORANGE
LGNO



WHITE/NEON BLUE FADE
WBNF

NEW COLORS

EVERON KNIT

Our bestselling Everon Knit takes comfort to the next level, with extra cushioning in the heel and a flexible, breathable stretch-knit upper.

Heel height: 1¾" Sizes: 6-10, 11

- Feather-light AERON™ EVA midsole, extra-thick in the heel
- Breathable, lightweight stretch-knit upper
- Odor-fighting fabric technology in the insole and interior lining
- Removable shock-absorbing latex-free polyurethane insole with arch support and heel cupping
- Oil- and slip-resistant rubber outsole
- Wide widths available in select colors



BLACK/REFLECTIVE
BLEF



SPECKLED BLACK/WHITE
SBLW



WHITE/RAINBOW FADE
WHRB



IN622A + IN122A
Shown in Electric Coral
INFINITE BBNG

NEW COLORS

DART

Everything you love about the Dart, with all-new updates and a fresh, minimalist silhouette that takes you from work to weekend in style.

Heel height: 1¼" Sizes: 6-10, 11

- Feather-light AERON™ EVA midsole for exceptional cushioning
- Lightweight lace-up mesh upper with a bootie fit
- Removable shock-absorbing latex-free polyurethane insole with arch support and heel cupping
- Odor-fighting fabric technology in the insole and interior lining
- Oil- and slip-resistant rubber outsole
- Easy to hand-wash with mild soap and water (towel- or air-dry)



BLACK/ORANGE CAMO BLOC



CORONET/PINK CAMO COPC



ARCTIC WHITE/MINT BLUE CAMO AWMB

NEW COLORS

FLY

The newly updated Fly comes in a range of fashion-forward colors and patterns, with features that cradle the feet in cushion and comfort.

Heel height: 1¾" Sizes: 5-10, 11 (unless noted)

- Feather-light AERON™ EVA midsole for exceptional cushioning
- Mesh upper with strategically placed TPU overlays for enhanced breathability and fit
- Removable shock-absorbing latex-free polyurethane insole with arch support and heel cupping
- Odor-fighting fabric technology in the insole and interior lining
- Oil- and slip-resistant rubber outsole
- Easy to hand-wash with mild soap and water (towel- or air-dry)



BLACK/WHITE FADE BWFD



NAVY/WHITE FADE WNFD



WHITE/HYPERKNIT YELLOW WHYW
 Sizes: 6-10, 11

MEN'S FOOTWEAR



NEW COLORS

M-INFINITE

The all-new Infinite is engineered for superior comfort and cushioning, with a thicker midsole and heel pad, plus a lightweight mesh upper.

Heel height: 1¾" Sizes: 8-11, 12, 13

- Feather-light AERON™ EVA midsole for exceptional cushioning
- Breathable and lightweight mesh upper
- Odor-fighting fabric technology in the insole and interior lining
- Removable shock-absorbing latex-free polyurethane insole with arch support and heel cupping
- Oil- and slip-resistant rubber outsole
- Easy to hand-wash with mild soap and water (towel- or air-dry)



BLACK/NEON CORAL
BLNC



BLACK SHADOW FADE
BLSF

NEW COLORS

M-EVERON KNIT

Our best-selling Everon Knit takes comfort to the next level, with extra cushioning in the heel and a flexible, breathable stretch-knit upper.

Heel height: 1¾" Sizes: 8-11, 12, 13

- Feather-light AERON™ EVA midsole, extra-thick in the heel for added cushioning at a key impact point
- Breathable, lightweight stretch-knit upper for a great fit and flexible comfort as feet swell
- Odor-fighting fabric technology in the insole and interior lining
- Removable shock-absorbing latex-free polyurethane insole with arch support and heel cupping
- Oil- and slip-resistant rubber outsole
- Easy to hand-wash with mild soap and water (towel- or air-dry)



BLACK/REFLECTIVE
BKRE



FADE TO BLUE
FTOB

LEGWEAR

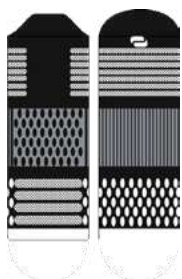
NEW STYLE

HUSTLE

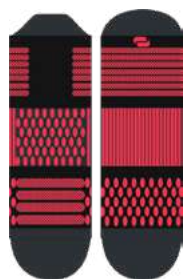
MEN'S and WOMEN'S
Performance No Show Socks-one pair
Heel tab, ankle length

Sizes: S/M, M/L

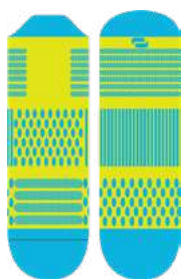
- State-of-the-art active comfort design
- Cushioned heel tab and bottom to reduce chafing and blisters
- Mesh upper for arch support and airflow
- Moisture wicking with odor-fighting technology



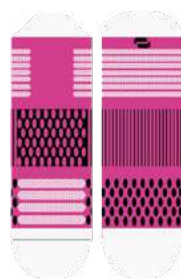
BLACK/GREY/
WHITE
BKGW



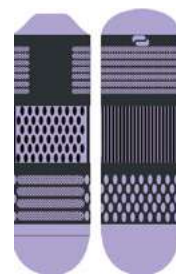
BLACK/VIVID
ORANGE
BKVO



HYPER YELLOW/
TURQUOISE
HYTQ



RUBY PINK/
BLACK/WHITE
PRBW



PEWTER/
LAVENDER
PWTLV

NEW STYLE

ELECTRIC

MEN'S and WOMEN'S
Calf Compression Sleeves-one pair
10-15 mmHg

Sizes: S/M, M/L

Regular: Fits calf widths up to 17"

Wide Calf: Fits calf widths from 17-22"

- Graduated 10-15 mmHg compression helps keep legs healthy and energized
- Soft, comfortable, and breathable
- Improves circulation and reduces swelling
- Reduces calf pain
- Top bands land comfortably below the knees, keeping sleeves in place
- Moisture wicking
- 65 Polyester/25 Spandex/10 Elastane



BLACK/VIVID
ORANGE
BKVO



HYPER YELLOW/
TURQUOISE
HYTQ



WOMEN'S SIZE CHART

SIZE (US)	BUST	WAIST	HIPS
XXS (0)	32-33	24-25	33-34
XS (2-4)	34-35	26-27	35-36
S (6-8)	36-37	28-29	37-38
M (10-12)	38-40	30-32	39-40
L (14-16)	41-43	33-36	42-44
XL (18-20)	44-46	37-39	45-47
2XL (22-24)	47-50	40-43	48-51
3XL (26-28)	51-54	44-47	52-55
4XL (30-32)	55-58	48-51	56-59
5XL	59-60	52-55	60-63



MODEL IS 5' 8" WEARING AN XS

HOW TO MEASURE

BUST

Measure under the arms around the fullest part of the bust/chest

WAIST

Measure under the natural waistline, loosely holding the tape measure

HIPS

Measure around the fullest part of the hips

INSEAM

Measure along the inside of the leg, from just below the crotch to 1" below the ankle

MEN'S SIZE CHART



MODEL IS 6' 2" WEARING A MEDIUM

SIZE (US)	CHEST	WAIST	HIPS
XS	33-35	26-28	32-34
S	36-38	29-31	35-37
M	39-41	32-34	38-40
L	42-45	35-38	41-44
XL	46-49	39-41	45-48
2XL	50-53	42-45	49-52
3XL	54-57	46-49	53-56
4XL	58-61	50-53	57-60
5XL	62-65	54-57	61-64

HOW TO MEASURE

CHEST

Measure under the arms around the fullest part of the chest.

WAIST

Measure under the natural waistline, loosely holding the tape measure.

HIPS

Measure around the fullest part of the hips.

INSEAM

Measure along the inside of the leg, from just below the crotch to 1" below the ankle.





RETURN POLICY

Careismatic Brands is fully committed to providing quality products and service. Products with quality issues may be returned within one year of the invoice date. The following guidelines will help expedite the process and will ensure that the proper credit is applied to your account.

Return Policy Guidelines:

- A Return Authorization (RA) Number is required for returned merchandise.
- Contact Customer Care at 800.283.7272 for an RA Number, which will be issued by email or fax.
- Be prepared to provide the corresponding invoice number for the merchandise being returned.
- We will not accept or give credit for returns of unauthorized merchandise.
- We reserve the right to deny credit for damaged garments due to misuse, abuse, alteration or excessive wear.

Transshipping:

- Transshipping (shipping, drop-shipping or forwarding merchandise for resale to any location) requires written consent.



 **INFINITY**[®]

CAREISMATIC BRANDS
1119 COLORADO AVE., SANTA MONICA, CA 90401

CUSTOMER CARE: 800.283.7272
M - F, 6 AM TO 4 PM PST
FAX: 888.283.7271
EMAIL: ORDERINQUIRY@CAREISMATIC.COM

NEED DIGITAL ASSETS?
EMAIL: DIGITALASSETS@CAREISMATIC.COM



ORDER AT [CBICENTRAL.COM](https://www.cbicentral.com)